

**CAMDEN COUNTY INSURANCE COMMISSION
AGENDA AND REPORTS
THURSDAY, FEBRUARY 23, 2017**

**CAMDEN COUNTY COLLEGE REGIONAL
EMERGENCY TRAINING CENTER
BOARD ROOM
420 WOODBURY-TURNERSVILLE ROAD
BLACKWOOD, NJ 08102
2:00 PM**

**To attend the meeting via teleconference please dial 1- 866-921-5493
and enter passcode 6364276#**

OPEN PUBLIC MEETINGS ACT - STATEMENT OF COMPLIANCE

In accordance with the Open Public Meetings Act, notice of this meeting was given by:

- I. Advertising the notice in the Courier Post;**
- II. Filing advance written notice of this meeting with the Commissioners of the Camden County Insurance Commission; and**
- III. Posting notice on the Public Bulletin Board of the Office of the County Clerk and the Regional Emergency Training Center**

**CAMDEN COUNTY INSURANCE COMMISSION
AGENDA
OPEN PUBLIC MEETING: FEBRUARY 23, 2017**

- MEETING CALLED TO ORDER - OPEN PUBLIC MEETING NOTICE READ**
- PLEDGE OF ALLEGIANCE**
- ROLL CALL OF COMMISSIONERS**
- APPROVAL OF MINUTES:** December 8, 2016 Open.....Appendix I
December 8, 2016 Closed Minutes.....Handout
January 26, 2017 Open.....Appendix I
January 26, 2017 Closed Minutes.....Handout

- CORRESPONDENCE – None**

2017 REORGANIZATION

Chairperson asks Executive Director to run the meeting for Election of Officers

- ELECTION OF CHAIRPERSON & VICE CHAIRPERSON**

- ATTORNEY TO ADMINISTER OATH OF OFFICES**

- COMMITTEE REPORTS**
 - Safety Committee: Verbal
 - Claims Committee: Verbal

- EXECUTIVE DIRECTOR/ADMINISTRATOR - PERMA**
 - Executive Director’s Report.....Pages 3-35
 - Resolution 6-17 Certifying the Election of Chairperson & Vice Chairperson.....Page 6
 - Resolution 7-17 Appoint Agent for Service of Process and for the Commission.....Page 7
For the Term of One Year
 - Resolution 8-17 Designating Custodian of Commission RecordsPage 8
 - Resolution 9-17 Designating Official Newspapers for the CommissionPage 9
 - Resolution 10-17 Designating Authorized Depositories for Commission AssetsPages 10-14
And Establishing Cash Management Plan
 - Resolution 11-17 Designating Commission TreasurerPage 15
 - Resolution 12-17 Designating Commission AttorneyPage 16
 - Resolution 13-17 Designating Authorized Signatures for Commission Bank Accounts ..Page 17
 - Resolution 14-17 Indemnifying Camden County Insurance Fund CommissionPage 18
Officials/Employees
 - Resolution 15-17 Authorizing Commission Treasurer to Process ContractedPage 19
Payments and Expenses

- TREASURER – David McPeak**
 - Resolution 19-17 February Bill List Pages 36-37
 - December Monthly Treasurer Reports..... Pages 38-39

- ATTORNEY – Laura J. Paffenroth, Esq..... Verbal**

- ❑ **CLAIMS SERVICE –AmeriHealth Casualty Services**
 - Medical Savings ReportPage 40
 - Stewardship ReportHandout

 - ❑ **CEL SAFETY DIRECTOR – J.A. Montgomery Risk Control**
 - Monthly Report..... Pages 41-45
 - Career Survival for First Line Supervisors.....Page 46

 - ❑ **OLD BUSINESS**
 - ❑ **NEW BUSINESS**
 - ❑ **PUBLIC COMMENT**
 - ❑ **CLOSED SESSION- PARS**
 - Resolution 20-17 Closed SessionPage 47
 - Motion for Executive Session (in accordance with the Open Public Meetings Act, N.J.S.A. 10:4-12)
-
- ❑ **MEETING ADJOURNMENT**
 - ❑ **NEXT SCHEDULED MEETINGS: [March 23, 2017](#) Camden County College Regional Emergency Training Center, 420 Woodbury-Turnersville Road, Blackwood, NJ 08102, 2:00 PM**

CAMDEN COUNTY INSURANCE COMMISSION

9 Campus Drive, Suite 216, Parsippany, NJ 07054

Telephone (201) 881-7632

Fax (201) 881-7633

Date: February 23, 2017

Memo to: Commissioners of the Camden County Insurance Commission

From: PERMA Risk Management Services

Subject: Executive Director's Report

☐ Reorganization Resolutions (Pages 6-19) – As we do annually the CCIC is required to reorganize at the February Executive Committee meeting to be effective March 1st as per the Commission By Laws. Listed below are the necessary Reorganization Resolutions which are included in the agenda on pages 6-19.

- Resolution 6-17 Certifying the Election of Chairperson and Vice Chairperson
- Resolution 7-17 Appointing Agent for Service of Process for the Commission For the Term of One Year
- Resolution 8-17 Designating Custodian of Commission Records
- Resolution 9-17 Designating Official Newspapers for the Commission
- Resolution 10-17 Designating Authorized Depositories for Commission Assets And Establishing Cash Management Plan
- Resolution 11-17 Designating Commission Treasurer
- Resolution 12-17 Designating Commission Attorney
- Resolution 13-17 Designating Authorized Signatures for Commission Bank Accounts
- Resolution 14-17 Indemnifying Camden County Insurance Fund Commission Officials/Employees
- Resolution 15-17 Authorizing Commission Treasurer to Process Contracted Payments and Expenses

☐ Motion to approve Reorganization Resolutions Number 6-17 through 15-17

☐ Extension of National Casualty Company Policy (Pages 20-21) – Attached on pages 20-21 is Resolution 16-17, Ratifying and Authorizing Purchase of Excess Insurances for Camden County Department of Police Services prepared by the Commission Attorney. The National Casualty Company policy was extended for the period of January 1, 2017 through January 31, 2017 while negotiating the 2017 renewal.

☐ Motion to approve Resolution 16-17 Ratifying and Authorizing Purchase of Excess Insurances for the Camden County Department of Police Services

❑ Extraordinary Unspecifiable Services (EUS Statements) (Pages 22-26) – Attached on pages 22-24 are copies of the Certification of Extraordinary Unspecifiable Services for the replacement policies of the Camden County Department of Police Services Excess Liability Insurance for the period of 1/31/17 to 1/1/18. As noted above National Casualty Company extended the expiration date of their policy to 1/31/17 so there was no lapse in coverage. Also attached on pages 25-26 is Resolution 17-17 Authorizing Purchase of Excess Insurances for the Camden County Department of Police Services. The Resolution was reviewed by the Commission Attorney.

❑ Motion to approve Resolution 17-17 Authorizing Purchase of Excess Insurances for the Camden County Department of Police Services

❑ Revised Risk Management Plan (Pages 27-32) – The Risk Management Plan was amended to reflect the new insurance carriers for the Excess Liability Insurance coverage for the Camden County Department of Police Services. Included in the agenda on pages 27-32 are the pertinent pages of the plan with the changes which are highlighted in yellow. The new insurance carriers are Hallmark Specialty Insurance Company, Genesis Insurance Company and QBE Insurance Corporation.

❑ Motion to approve Resolution 18-17 Revised Risk Management Plan

❑ 2017 Actuary Request for Price Quotes – The Fund Office solicited quotations for the services of an Actuary for 2017. There were two vendors that provided a quotation. The responses received were from the current Actuary, The Actuarial Advantage, Inc., and SGRISK Actuaries Consultants. Copies of the responses were previously sent to the Commission Attorney, Commissioners, and Commission Treasurer for their review. Below is a summary of the fees. We would request a brief discussion on a recommended firm to service the Commission.

2017 Actuary Quotes	
Vendor	Fees
The Actuarial Advantage, Inc.	\$15,939
SGRisk Actuaries Consultants	\$19,000

❑ Motion to approve the fee quote from _____ for actuarial services for 2017 for a fee of _____

❑ 2017 Auditor Request for Price Quotes – The Fund Office solicited quotations for the services of an Auditor for 2017. There was only one response received from our current vendor Bowman & Company, LLP. The proposed quote for audit services will not exceed \$13,900 for the year ending December 31, 2017, which is within the budget amount. A copy of the response will be available for review at the meeting.

❑ Motion to approve the fee quote from The Bowman & Company, LLP for auditor services for 2017 with a not to exceed amount of \$13,900

- ❑ **Certificate of Insurance Issuance Report (Appendix II)** – Attached in appendix II is the certificate of issuance report from the CEL listing the 2017 renewal certificates and certificates issued for the period of 1/1/17 to 1/31/17. There were 218 certificate of insurances issued during this period.
 - ❑ **Motion to approve the certificate of insurance report**
- ❑ **NJ Excess Counties Insurance Fund (CELJIF)** – The Board of Fund Commissioners held a special meeting on January 25, 2017 to review two Settlement Authority Requests. No other Fund business was discussed and this is being provided as information only. The CEL’s Reorganization meeting was held prior to the Commission meeting. Executive Director will provide a verbal update of the meeting and a summary report will be included in the next agenda. The CEL is scheduled to meet again on April 27, 2017.
- ❑ **CCIC Financial Fast Track (Page 33)** – Included in the agenda on page 33 is a copy of the Financial Fast Track Report as of **December 31, 2016**. The report indicates the Commission has a surplus of **\$14,091,135**. Line 10 of the report, “Investment in Joint Venture” is the Camden County Insurance Commission’s share of the equity in the CEL. CCIC’s current equity in the CEL is **\$2,592,564**.
- ❑ **NJ CEL Property and Casualty Financial Fast Track (Page 34)** - Included in the agenda on page 34 is a copy of the NJ CEL Financial Fast Track Report as of **December 31, 2016**. The report indicates the Fund has a surplus of **\$8,316,421**.
- ❑ **Claims Tracking Report (Page 35)** – Included in the agenda on page 35 is the Claims Activity Report as of January 31, 2017. The Claims Activity monitors open and closed claims each month. The Executive Director will review the report with the Commission.
- ❑ **2017 Property & Casualty Assessments** – In accordance with the Commission’s By Law’s, the property and casualty assessment bills were mailed to the member entities via certified mail and e-mail. The assessment bills included a CEL dividend credit for the 2010 & 2011 Fund Years. The first installment will be due on March 15, 2017. Future assessment bills will be due on May 15, 2017 and September 15, 2017.
- ❑ **2017 Excess Insurance and Ancillary Coverage Policies** - The CEL renewal policies will again be available electronically through the Conner Strong & Buckelew secure website for those authorized representatives who were designated by their respective member entity. In addition to this, certain Commission professionals are granted access. The CEL Underwriting Manager is in the process of reviewing the policies and will release an e-mail with instructions to access the website when the policies are available. The limit/retention schematics and Plan of Risk Management will also be available on this website. The policies are expected to be available by 4/1/17.

RESOLUTION NO. 6-17

CAMDEN COUNTY INSURANCE FUND COMMISSION

**CERTIFYING THE ELECTION OF
CHAIRPERSON AND VICE-CHAIRPERSON**

BE IT RESOLVED by the Camden County Insurance Fund Commission that the following persons have been elected as Chairperson and Vice-Chairperson:

ROSS G. ANGILELLA Chairperson

STEVEN WILLIAMS Vice-Chairperson

BE IT FURTHER RESOLVED, the Chairperson and Vice-Chairperson shall serve for a one-year term through 2018 reorganization of the Commission and until their successors shall be elected and qualified.

ADOPTED: 2-23-17

BY: _____
 CHAIRPERSON

ATTEST:

 VICE-CHAIRPERSON

RESOLUTION NO. 7-17

**CAMDEN COUNTY INSURANCE FUND COMMISSION
APPOINTING AGENT FOR SERVICE OF PROCESS FOR THE COMMISSION
FOR THE TERM OF ONE YEAR**

BE IT RESOLVED by the Camden County Insurance Fund Commission that PERMA Risk Management Services is hereby appointed as agent for service of process upon the Commission, at its office located at 9 Campus Drive, Parsippany, New Jersey 07054, effective upon adoption of the within resolution for the term of one year through re-organization 2018 or until its successor has be appointed and qualified.

BE IT FURTHER RESOLVED that appointment of Agent for the Commission for Service of Process shall be at no cost to the Commission.

ADOPTED: 2-23-17

BY: _____
CHAIRPERSON

ATTEST:

VICE-CHAIRPERSON

RESOLUTION NO. 8-17

**CAMDEN COUNTY INSURANCE FUND COMMISSION
DESIGNATING CUSTODIAN OF COMMISSION RECORDS**

BE IT RESOLVED that, Cathy Dodd, with PERMA Risk Management Services, is hereby designated as the custodian of the Commission records which shall be kept at the office of PERMA, located at 9 Campus Drive, Parsippany, New Jersey 07054.

BE IT FURTHER RESOLVED that the Custodian of Commission Records shall serve for a one-year term effective upon adoption of the within resolution through 2018 reorganization of the Commission and until their successors shall be elected and qualified.

BE IT FURTHER RESOLVED that appointment of the Custodian of Commission Records shall be at no cost to the Commission.

ADOPTED: 2-23-17

BY: _____
CHAIRPERSON

ATTEST:

VICE-CHAIRPERSON

RESOLUTION NO. 9-17

**CAMDEN COUNTY INSURANCE FUND COMMISSION
DESIGNATING OFFICIAL NEWSPAPER FOR THE COMMISSION**

BE IT RESOLVED by the Camden County Insurance Fund Commission, (hereinafter the Commission) that the Courier Post is hereby designated as the official newspaper for the Commission and that all official notices required to be published shall be published in this newspaper.

BE IT FURTHER RESOLVED that the designation of an official newspaper shall be effective upon adoption of the within resolution for the term of one year through the 2018 re-organization of the Commission.

BE IT FURTHER RESOLVED that in the case of special meetings or emergency meetings, the Secretary or Assistant Secretary of the Commission shall give notice of said meetings to the Courier Post.

ADOPTED: 2-23-17

BY: _____
CHAIRPERSON

ATTEST:

VICE-CHAIRPERSON

RESOLUTION NO. 10-17

CAMDEN COUNTY INSURANCE FUND COMMISSION

**DESIGNATING AUTHORIZED DEPOSITORIES FOR COMMISSION ASSETS
AND ESTABLISHING CASH MANAGEMENT PLAN**

BE IT RESOLVED that First Colonial Community Bank, is hereby designated as the depository for assets of the Commission; and

BE IT FURTHER RESOLVED that the attached Cash and Investment Management Plan, which includes the designation of authorized depositories, be and is hereby adopted.

ADOPTED: 2-23-17

BY: _____
CHAIRPERSON

ATTEST:

VICE-CHAIRPERSON

CAMDEN COUNTY INSURANCE FUND COMMISSION

2017 CASH MANAGEMENT AND INVESTMENT POLICY

1.) **Cash Management and Investment Objectives**

The CAMDEN COUNTY INSURANCE FUND COMMISSION (hereinafter referred to as the FUND or COMMISSION) objectives in this area are:

- a.) Preservation of capital.
- b.) Adequate safekeeping of assets.
- c.) Maintenance of liquidity to meet operating needs, claims settlements and dividends.
- d.) Diversification of the FUND's portfolio to minimize risks associated with individual investments.
- e.) Maximization of total return, consistent with risk levels specified herein.
- f.) Investment of assets in accordance with State and Federal Laws and Regulations.
- g.) Accurate and timely reporting of interest earnings, gains and losses by line of coverage in each Fund year.
- h.) Where legally permissible, cooperation with other local municipal joint insurance funds, and the New Jersey Division of Investment in the planning and execution of investments in order to achieve economies of scale.
- i.) Stability in the value of the FUND's economic surplus.

2.) **Permissible Investments**

Investments shall be limited to the following:

- a.) Bonds or other obligations of the United States of America or obligations guaranteed by the United States of America.
- b.) Any federal agency or instrumentality obligation authorized by Congress that matures within 397 days from the date of purchase, and has a fixed rate of interest not dependent on any index or external factors.
- c.) Bonds or other obligations of the local unit or bonds or other obligations of school districts of which the local unit is a part or within which the school district is located; or
- d.) Bonds or other obligations, having a maturity date not exceeding 397 days, approved by the Division of Investment of the Department of Treasury for investment by local units.
- e.) Debt obligations of federal agencies or government corporations with maturities not greater than five (5) years from the date of purchase, excluding mortgage backed obligations, providing that such investments are purchased through the New Jersey Division of Investment and are

consistent the Division's own investment guidelines, and providing that the investment a fixed rate of interest not dependent on any index or external factors.

- f.) Repurchase agreements of fully collateralized securities, subject to rules and conditions establish by the N.J. Department of Community Affairs.

No investment or deposit shall have a maturity longer than five (5) years from date of purchase.

3.) **Authorized Depositories**

In addition to the above, the FUND is authorized to deposit funds in certificates of deposit and other time deposits in banks covered by the Governmental Unit Depository Protection Act, NJSA 17:9-14 et seq. (GUDPA).

The FUND is also authorized to invest its assets in the New Jersey Cash Management Fund.

4.) **Authority for Investment Management**

The Treasurer is authorized and directed to make investments, with a maturity of three months or longer, through asset managers that may be selected by the FUND. Such asset managers shall be discretionary trustees of the FUND.

Their actions and decisions shall be consistent with this plan and all appropriate regulatory constraints.

In executing investments, asset managers shall minimize transaction costs by querying prices from at least three (3) dealers and purchasing securities on a competitive basis. When possible, federal securities shall be purchased directly from the US Treasury. Transactions shall not be processed through brokerages, which are organizationally affiliated with the asset manager. Transactions may also be processed through the New Jersey Division of Investment by the Fund's asset managers.

5.) **Preservation of Capital**

Securities shall be purchased with the ability to hold until maturity.

6.) **Safekeeping**

Securities purchased on behalf of the FUND shall be delivered electronically or physically to the FUND's custodial bank, which shall maintain custodial and/or safekeeping accounts for such securities on behalf of the FUND.

7.) **Selection of Asset Managers, Custodial Banks and Operating Banks**

Asset managers, custodial banks and operating banks shall be retained for contract periods of one (1) year. Additionally, the FUND shall maintain the ability to change asset managers and/or custodial banks more frequently based upon performance appraisals and upon reasonable notice, and based upon changes in policy or procedures.

8.) **Reporting**

Asset managers will submit written statements to the treasurer and executive director describing the proposed investment strategy for achieving the objectives identified herein. Asset managers shall also submit revisions to strategy when justified as a result of changing market conditions or other factors. Such statements shall be provided to the Treasurer and Executive Director. The statements shall also include confirmation that all investments are made in accordance with this plan. Additionally, the Investment Manager shall include a statement that verifies the Investment Manager has reconciled and determined the appropriate fair value of the Funds portfolio based on valuation guidelines that shall be kept on file in the Executive Director's office.

The Treasurer shall report to the Fund Commissioners at all regular meetings on all investments. This report shall include information on the balances in all bank and investment accounts, and purchases, sales, and redemptions occurring in the prior month.

9.) **Audit**

This plan, and all matters pertaining to the implementation of it, shall be subject to the FUND's annual audit.

10.) **Cash Flow Projections**

Asset maturity decisions shall be guided by cash flow factors payout factors supplied by the Fund Actuary and reviewed by the Executive Director and the Treasurer.

11.) **Cash Management**

All moneys turned over to the Treasurer shall be deposited within forty-eight (48) hours in accordance with N.J.S.A. 40A:5-15.

In the event a check is made payable to the Treasurer rather than the Fund, the following procedure is to be followed:

- a.) The Treasurer endorses the check to the Fund and deposits it into the Fund account.

- b.) The Treasurer notifies the payer and requests that in the future any check be made payable to the Fund.

The Treasurer shall minimize the possibility of idle cash accumulating in accounts by assuring that all amounts in excess of negotiated compensating balances are kept in interest bearing accounts or promptly swept into the investment portfolio.

The method of calculating banking fees and compensating balances shall be documented to the Fund Commissioners by the Treasurer at least annually.

Cash may be withdrawn from investment pools under the discretion of asset managers only to fund operations, claims imprest accounts, or approved dividend payments.

The Treasurer shall escheat to the State of New Jersey checks, which remain outstanding for twelve or more months after the date of issuance. However, prior to implementing such procedures, the Treasurer, with the assistance of the claims agent, as needed, shall confirm that the outstanding check continues to represent a valid claim against the FUND.

RESOLUTION NO. 11-17

**CAMDEN COUNTY INSURANCE FUND COMMISSION
DESIGNATING COMMISSION TREASURER**

BE IT RESOLVED that pursuant to the Camden County Insurance Fund Commission, Rules and Regulation, Article III, ORGANIZATION, Commission Professionals, provision 1, the Commission does hereby appoint David McPeak, Chief Financial Officer for the County of Camden, as Commission Treasurer for the term commencing upon adoption of the within resolution through 2018 Commission Reorganization; and

BE IT FURTHER RESOLVED that David McPeak shall receive no compensation to serve as Treasurer to the Commission.

ADOPTED: 2-23-17

BY: _____
CHAIRPERSON

ATTEST:

VICE-CHAIRPERSON

RESOLUTION NO. 12-17

**CAMDEN COUNTY INSURANCE FUND COMMISSION
DESIGNATING COMMISSION ATTORNEY**

BE IT RESOLVED that pursuant to the Camden County Insurance Fund Commission, Rules and Regulation, Article III, ORGANIZATION, Commission Professionals, provision 4, the Commission does hereby appoint Laura J. Paffenroth, Assistant County Counsel for the County of Camden, as Commission Attorney for the term commencing upon adoption of the within resolution through 2018 Commission Reorganization; and

BE IT FURTHER RESOLVED that Laura J. Paffenroth shall receive no compensation to serve as Attorney to the Commission.

ADOPTED: 2-23-17

BY: _____
CHAIRPERSON

ATTEST:

VICE-CHAIRPERSON

RESOLUTION NO. 13-17

**CAMDEN COUNTY INSURANCE FUND COMMISSION
DESIGNATING AUTHORIZED SIGNATURES FOR COMMISSION BANK ACCOUNTS**

BE IT RESOLVED by the Camden County Insurance Fund Commission (hereinafter the Commission), that all funds of the Commission shall be withdrawn from the official named depositories by check, which shall bear the signatures of at least two (2) of the following persons who are duly authorized pursuant to this resolution, except for those checks in the amount of \$100,000 or more and in that instance at least three signatures shall be required; and

BE IT FURTHER RESOLVED that for funds in the amount of \$2,500 or less, withdrawn from the official named depositories by check prepared by the Commission's Claims Administrator for the purposes of satisfying workers compensation claims, such checks shall bear the signature of at least one (1) of the following persons who are duly authorized pursuant to this resolution.

- ROSS G. ANGILELLA - Chairperson
- STEVEN WILLIAMS - Vice-Chairperson
- ANNA MARIE WRIGHT - Commissioner
- DAVID MCPEAK - Treasurer

ADOPTED: 2-23-17

BY: _____
CHAIRPERSON

ATTEST:

VICE-CHAIRPERSON

RESOLUTION NO. 14-17

**INDEMNIFYING CAMDEN COUNTY INSURANCE FUND COMMISSION
OFFICIALS/EMPLOYEES**

BE IT RESOLVED by the Camden County Insurance Fund Commission (hereinafter the “Commission”) that Commission elected officials, appointed officials, and employees are hereby indemnified in a manner similar to the provisions of N.J.S.A. 59:10-1, et seq. and 59:10A-1 et seq.; and

BE IT FURTHER RESOLVED that the aforesaid indemnification shall include the reasonable costs of defense; and

BE IT FURTHER RESOLVED that in interpreting the above referenced statutes, all discretion statutorily vested with the State shall be exercised by the Commission, and all discretion vested with the Attorney General shall be exercised by the Commission Attorney, subject to review by the Commission; and

BE IT FURTHER RESOLVED that any employee, inclusive of public officials employed by the Commission, shall be and is hereby indemnified for exemplary or punitive damages resulting from the employee’s civil violation of State or Federal law if, in the opinion of the Commission, the acts committed by the employee, upon which the damages are based, did not constitute actual fraud, actual malice, willful misconduct, or an intentional wrong; and

BE IT FURTHER RESOLVED that the aforesaid indemnification shall include the reasonable costs of defense and shall permanently attach to all acts performed during the calendar year 2017 through 2018 Commission Re-organization, and to all acts performed in all prior years thereto; and

BE IT FURTHER RESOLVED that the Commission may undertake an evaluation of the acts committed by an employee, for the purpose of determining whether the acts constituted actual fraud, actual malice, willful misconduct, or an intentional wrong, at such time as there shall be sufficient factual data available to reach a reasonable determination on the issue, and such determination, based upon the availability of information, may be made either prior to or subsequent to trial or settlement of the matter in question.

ADOPTED: 2-23-17

BY: _____
CHAIRPERSON

ATTEST:

VICE-CHAIRPERSON

RESOLUTION NO. 15-17

**CAMDEN COUNTY INSURANCE COMMISSION
AUTHORIZING COMMISSION TREASURER TO PROCESS
CONTRACTED PAYMENTS AND EXPENSES**

WHEREAS, the Camden County Insurance Commission (hereinafter “the Commission”) is duly constituted as an insurance commission and is subject to all applicable laws and regulations of the State of New Jersey; and

WHEREAS, the Board of Commissioners has deemed it necessary and appropriate to provide authorization to the Commission Treasurer to pay certain Commission contracted payments and expenses during the month(s) when the Commission does not meet; and

WHEREAS, payment by the Commission Treasurer of contracted payments and expenses for the month(s) in which the Commission does not meet shall be ratified by the Commission at its next regularly scheduled meeting; now, therefore,

BE IT RESOLVED by the Board of Commissioners of the CAMDEN COUNTY INSURANCE COMMISSION that the Commission Treasurer is hereby authorized to process the contracted payments and Commission expenses for all months in which the Commission does not meet during the year 2017.

BE IT FURTHER RESOLVED that the Board of Commissioners of the CAMDEN COUNTY INSURANCE COMMISSION shall ratify the contracted payments and Commission expenses so paid by the Commission Treasurer pursuant to the within Resolution at its next regularly scheduled monthly meeting.

ADOPTED: 2-23-17

BY: _____
CHAIRPERSON

ATTEST:

VICE-CHAIRPERSON

RESOLUTION NO. 16-17

**CAMDEN COUNTY INSURANCE COMMISSION
RESOLUTION RATIFYING AND AUTHORIZING PURCHASE OF EXCESS
INSURANCES FOR CAMDEN COUNTY DEPARTMENT OF POLICE SERVICES**

WHEREAS, the Camden County Insurance Commission (hereinafter “the Commission”) is duly constituted as a joint insurance fund and is subject to certain requirements of the Local Public Contracts Law; and

WHEREAS, by Resolution adopted on January 26, 2016, the Commission deemed it necessary and appropriate to obtain certain extraordinary and unspecifiable services for the Camden County Department of Police Services; and

WHEREAS, there is a need to ratify and award certain insurance coverages on a month-to-month basis for the month of January at the same terms and conditions, as the Commission was in the process of re-procurement of these services; now, therefore,

BE IT RESOLVED that the following insurances be and are hereby ratified and awarded for the period of January 1, 2017 through January 31, 2017:

Purpose	Name of Firm	Term	Method of Purchase
Excess Liability	National Casualty Company	1/1/2017 to 1/31/17	Direct

BE IT FURTHER RESOLVED that the Fund Underwriting Manager extended the above-referenced insurance coverages with the above firms for the Camden County Department of Police Services for the period stated herein; and

BE IT FURTHER RESOLVED that the policy extensions providing the specific terms of such coverages will be on file in the Fund’s office, located at 9 Campus Drive –Suite 216 Parsippany, NJ 07054; and

BE IT FURTHER RESOLVED that notice of this action shall be advertised in the Commission’s official newspaper in accordance with law and notice of this action along with completed contracts shall be filed with the New Jersey Department of Banking and Insurance and the New Jersey Department of Community Affairs.

ADOPTED: February 23, 2017

BY: _____
CHAIRPERSON

ATTEST:

VICE-CHAIRPERSON

CERTIFICATION OF
EXTRAORDINARY UNSPECIFIABLE SERVICES

TO: Board of Commissioners, Camden County Insurance Commission

FROM: Brad Stokes, Commission Executive Director

RE: Excess Law Enforcement Liability, General Liability and Automobile Liability Coverages

DATE: January 27, 2017

This is to request your approval of a resolution authorizing a contract to be issued as follows:

Firm	Coverage	Limits		Cost
Hallmark Specialty Insurance Company	Excess Liability	\$5,000,000 \$5,000,000	x	\$187,272.00
Genesis Insurance Company	Excess Automobile Liability	\$5,000,000 \$10,000,000	x	\$35,000.00
QBE Insurance Corporation	Excess General Liability / Law Enforcement	\$5,000,000 \$10,000,000	x	\$152,968.00
Hallmark Specialty Insurance Company	Excess Liability	\$5,000,000 \$15,000,000	x	\$117,300.00

TERM: 01/31/2017 – 01/01/2018

PURPOSE: Excess Liability Insurance for the Fund

This contract is requested to be awarded without competitive bidding as an Extraordinary, Unspecifiable Services pursuant to N.J.S.A. 40A:11-5(1) (a) (ii) and N.J.A.C. 5:34-2.1 et seq. I, as the Commission Executive Director of the Fund, certify as follows:

1. Solicitation of Quotations

Solicitation of quotations was conducted in accordance with the attached memorandum dated 1/27/2017.

2. Nature of Contracts

These contracts consist of specialized and qualitative services requiring flexibility, expertise, extensive training and a proven reputation in that they involve extensive experience in the administration of Excess Liability.

Hallmark Specialty Insurance Company, Genesis Insurance Company, and QBE Insurance Corporation have the flexibility, expertise, extensive training and proven reputation required for the provision of these services.

The services to be provided by the firms are specialized and qualitative in nature in that they concern the implementation and administration of the Excess Liability Coverage for the Fund. The wide range of insurance coverage required for these activities adds to the special and qualitative nature of the insurance services that are the subject of the contract to be awarded. These services require the expertise of an insurance company with a proven reputation. Furthermore, the purchase of insurance coverage is exempt from the requirement of public advertisement for bids and bidding therefore pursuant to N.J.S.A. 40A:11-5(1)(m).

3. Written Specifications

Not-applicable as per Local Finance Notice No. AU 2002-2 dated February 26, 2002.

In consideration of the above and the rules and regulations of the Division of Local Government Services, I, therefore request that the above contracts be considered as an Extraordinary Unspecifiable Service and awarded accordingly.

Respectfully,

Brad Stokes,
Commission Executive Director

Date: 1/27/2017
To: Fund Commissioners
Camden County Insurance Commission
From: Conner Strong & Buckelew, Executive Director
Subject: Marketing of the Excess Liability Program

Conner Strong & Buckelew approached twenty Insurance Companies on behalf of the Camden County Department of Police Services to procure Excess Liability Insurance for the 01/31/2017 to 01/01/2018 policy period. Hallmark Specialty Insurance Company, Genesis Insurance Company, and QBE Insurance Corporation provided the most aggressive conditions, limits and costs, and Conner Strong & Buckelew was instructed to bind coverage with the firms for the 01/31/2017 to 01/01/2018 policy period.

If you have any questions, please let me know and we can discuss in more detail.

Cc: PERMA, JIF Executive Director

RESOLUTION NO. 17-17

**CAMDEN COUNTY INSURANCE COMMISSION
RESOLUTION AUTHORIZING PURCHASE OF EXCESS INSURANCES FOR CAMDEN
COUNTY DEPARTMENT OF POLICE SERVICES**

WHEREAS, the Camden County Insurance Commission (hereinafter “the Commission”) is duly constituted as a joint insurance fund and is subject to certain requirements of the Local Public Contracts Law; and

WHEREAS, the Commission has deemed it necessary and appropriate to obtain certain extraordinary and unspecifiable services for the Camden County Department of Police Services; and

WHEREAS, the Commission resolves to award various agreements for certain insurance coverages in accordance with N.J.S.A 40A:11-5(l)(m), and has received a certification from the Underwriting Manager for the New Jersey Counties Excess Joint Insurance Fund (the "Fund") on the nature of such services and the due diligence efforts that were made to obtain quotes for the coverages described herein; now, therefore,

BE IT RESOLVED that the following insurance contracts be awarded for the period of January 31, 2017 through January 1, 2018:

Purpose	Name of Firm	Term	Method of Purchase
Excess Liability	Hallmark Specialty Insurance Company	1/31/17 to 1/1/18	Direct
Excess Auto Liability	Genesis Insurance Company	1/31/17 to 1/1/18	Direct
Excess Gen Liab/Law Enforcement	QBE Insurance Corporation	1/31/17 to 1/1/18	Direct
Excess Liability	Hallmark Specialty Insurance Company	1/31/17 to 1/1/18	Direct

BE IT FURTHER RESOLVED that the Fund Underwriting Manager will place the above-referenced insurance coverages with the above firms or other licensed insurers as necessary for the Camden County Department of Police Services; and

BE IT FURTHER RESOLVED that the policy or policies providing the specific terms of such coverage will be on file in the Fund’s office, located at 9 Campus Drive –Suite 216 Parsippany, NJ 07054; and

BE IT FURTHER RESOLVED that notice of this action shall be advertised in the Commission's official newspaper in accordance with law and notice of this action along with completed contracts shall be filed with the New Jersey Department of Banking and Insurance and the New Jersey Department of Community Affairs.

ADOPTED: February 23, 2017

BY: _____
CHAIRPERSON

ATTEST:

VICE-CHAIRPERSON

RESOLUTION NO. 18-17

Camden County Insurance Commission
(hereinafter the "Insurance Commission")

AMENDED 1/31/2017

BE IT RESOLVED by the Insurance Commission's governing body that effective 1/1/17 the 2017 Plan of Risk Management shall be:

- 1.) The perils or liability to be insured against.
 - a.) The Insurance Commission insures the following perils or liability:
 - Workers' Compensation including Employer's Liability, USL&H and Harbor Marine/Jones Act.
 - General Liability including Law Enforcement Liability and Employee Benefits Liability.
 - Automobile Liability including PIP and Uninsured/Underinsured Motorists Coverage.
 - Property, Auto Physical Damage and Boiler & Machinery.
 - b.) The following coverage are provided to the Insurance Commission's member entities by their membership in the New Jersey Counties Excess Joint Insurance Fund (NJC).
 - Excess Workers' Compensation including Employers Liability
 - Excess General Liability including law enforcement liability
 - Excess Auto Liability
 - Excess Property including Boiler and Machinery
 - Public Officials Liability/School Board Legal/EPL
 - Crime
 - Pollution Liability
 - Medical Professional and General Liability
 - Excess Medical Professional and General Liability

NJC retains limits of \$500,000 excess \$300,000 for Workers Compensation and Employers Liability. NJC purchases from Wesco Insurance Company \$200,000 excess \$800,000 each occurrence/employee and purchases from Safety National Casualty Company 'Statutory' Workers Compensation limits excess of \$1,000,000 and \$5,000,000 excess of \$1,000,000 for Employers Liability. Additional Employers Liability limits of \$5,000,000 excess of \$6,000,000 are purchased from Underwriters at Lloyds, \$15,000,000 per occurrence/\$15,000,000 aggregate excess \$11,000,000 from National Casualty.

Note: CCPD purchases excess workers compensation at limits of \$1,000,000 excess \$1,000,000 each occurrence from Wesco Insurance Company and excess workers compensation at statutory limits excess of \$2,000,000 from Midlands. CCPD also purchases excess employers liability at limits of \$1,000,000 excess \$1,000,000 each occurrence from Wesco Insurance Company and excess employers liability at limits of \$2,000,000 each employee/\$2,000,000 aggregate excess of \$2,000,000 from Midlands. CCPD also purchases from **Hallmark and QBE** limits of \$15,000,000 per occurrence/\$15,000,000 aggregate excess of \$4,000,000 for employers liability

b.) General Liability limits.

- The Insurance Commission covers \$250,000 per occurrence. *Camden County has a \$5,000 per occurrence entity deductible.*
 - Law Enforcement - included in the General Liability limits.
 - Employee Benefits Liability - included in the General Liability limits.
 - Subsidence - \$250,000 per occurrence
 - Sexual Abuse or Molestation Coverage - \$250,000 per occurrence except for schools.
 - Owned Watercraft 35' in length or less - \$250,000.
 - Garagekeepers Legal Liability - \$250,000

Camden County Department of Police Services (CCPD) was added for coverage effective 4/8/13. The Insurance Commission covers \$1,000,000 per occurrence for CCPD.

Note: CCPD purchases excess law enforcement and general liability at limits of \$20,000,000 per occurrence and \$20,000,000 annual aggregate excess \$1,000,000 each occurrence from **QBE and Hallmark**.

c.) Automobile Liability limits.

- The Insurance Commission covers automobile liability claims as follows:
 - Automobile Bodily Injury and Property Damage Liability claims at a combined single limit of \$250,000. *Camden County has a \$5,000 per occurrence entity deductible.*
 - The Insurance Commission covers \$250,000 for Personal Injury Protection (PIP) per Addendum I of this Plan.
 - The Insurance Commission covers \$15,000/\$30,000/\$5,000 for Underinsured/Uninsured Motorists Liability per Addendum II of this Plan.

Camden County Department of Police Services (CCPD) was added for coverage effective 4/8/13. The Insurance Commission covers \$1,000,000 per occurrence for CCPD.

- The NJC covers excess automobile liability claims as follows *except for CCPD who does not currently purchase excess automobile liability insurance from the NJC::*
 - Automobile Bodily Injury and Property Damage Liability claims excess of the Insurance Commission's \$250,000 CSL limit. Included in the NJC's excess General Liability limits as shown above.

NJC retains limits of \$250,000 excess \$250,000 and purchases from Underwriters at Lloyds limits of \$5,000,000 per occurrence and a \$10,000,000 12 month aggregate (1/1/17-1/1/18) excess over and above \$500,000. NJC also purchases from National Casualty limits of \$15,000,000 per occurrence and a \$15,000,000 annual aggregate (1/1/17-1/1/18) excess over and above the \$5,000,000/\$10,000,000 with Underwriters at Lloyds.

The NJC does not provide excess PIP OR Uninsured/Underinsured Motorist Coverage.

The excess general liability, auto liability, law enforcement liability and employers liability limits with Underwriters at Lloyds, National Casualty are per member Commission and are shared limits amongst CCIC member entities.

Notes:

- (1) CCPD purchases excess auto liability at limits of \$20,000,000 excess \$1,000,000 each occurrence and \$20,000,000 annual aggregate from **Genesis and Hallmark**.
- (2) The Underwriters at Lloyds amended the excess liability policy aviation/aircraft exclusion to make an exception for Unmanned Aerial Vehicle – a tethered blimp.

d.) Public Officials/School Board Legal/Employment Practices Liability

- The NJC via the commercial market covers public officials liability/school board legal liability/employment practices liability as follows:
 - \$10,000,000 each claim and in the annual aggregate on a claims made basis per member Insurance Commission (except for Camden County Health Services which has a \$1,000,000 each claim and in the annual aggregate sub-limit) subject to the retentions as outlined below:
 - Camden County - \$250,000 each POL & EPL (including the Camden Department of Police Services effective 4/8/13)
 - Camden County College-\$25,000 SBL & \$50,000 EPL
 - Camden County College Foundation -\$25,000 SBL & \$50,000 EPL
 - Camden County Board of Social Services - \$5,000 each POL & EPL
 - Camden County Municipal Utilities Authority - \$25,000 each POL & EPL
 - Camden County Health Services - \$25,000 each POL & EPL
 - Camden County Pollution Finance Authority - \$25,000 each POL & EPL
 - Camden County Improvement Authority - \$10,000 each POL & EPL

There is a sub-limit of \$1,000,000 each claim and in the annual aggregate excess of a member entity retention of \$100,000 for sexual abuse/molestation for schools only.

d.) To provide for quality defense and control costs, the Insurance Commission has established an approved defense attorney panel with firms which specialize in Title 59 matters. The performance of the defense attorneys is overseen by the Insurance Commission Attorney, as well as, the various firms which audit the claims adjusters.

2.) Coverage to be purchased from a commercial insurer, if any.

The Insurance Commission does purchase commercial insurance for *CCPD*. For *CCPD*, the Insurance Commission purchases excess law enforcement, general liability and automobile liability from **QBE, Genesis and Hallmark**. The Insurance Commission also purchases excess workers compensation from Wesco Insurance Company and Midlands.

8.) Reinsurance to be purchased.

The Insurance Commission does not purchase reinsurance.

9.) Procedures for the closure of Insurance Commission years, including the maintenance of all relevant accounting records.

a.) Not applicable at this time.

10.) Assumptions and Methodology used for the calculation of appropriate reserves requirements to be established and administered in accordance with sound actuarial principles.

a.) The general approach in estimating the loss reserves of the Insurance Commission is to project ultimate losses for each Insurance Commission year using paid and incurred loss data. Two traditional actuarial methodologies are used: the paid loss development method and the incurred loss development method. From the two different indications resulting from these methods the Insurance Commission Actuary chooses a "select" estimate of ultimate losses. Subtraction of the paid losses from the select ultimate losses yields the loss reserve liability or Insurance Commission funding requirement.

b.) The following is an overview of the two actuarial methods used to project the ultimate losses.

Paid Loss Development Method - This method uses historical accident year paid loss patterns to project ultimate losses for each accident year. Because this method does not use case reserve data, estimates from it are not affected by changes in case

- sensitive to changes in the rate of which claims are settled and losses are paid, and may underestimate ultimate losses if provisions are not included for very large open claims.
- Case Incurred Loss Development Method - This method is similar to the paid loss development method except it uses historical case incurred loss patterns (paid plus case outstanding reserves) to estimate ultimate losses. Because the data used includes case reserve estimates, the results from this method may be affected by changes in case reserve adequacy.

11.) The maximum amount a certifying and approving officer may approve pursuant to N.J.A.C. 11:15-2.22.

- 10% of partial total not to exceed \$15,000 for workers compensation claims (Effective 12/11/14)
- \$7,500 for liability claims
- With the advance approval of the Insurance Commission Attorney or Executive Director, the certifying and approving officer may also pay hospital bills if waiting until after the next regularly scheduled Insurance Commission meeting would result in the loss of a discount on such bills. When the certifying and
- approving officer utilizes this authority, a report shall be made to the Commissioners at their next meeting.

Adopted by the Governing Body this 23 day of February, 2017.
Camden County Insurance Commission

By: _____
Chairperson

Attest:

Secretary

CAMDEN COUNTY INSURANCE COMMISSION				
FINANCIAL FAST TRACK REPORT				
AS OF December 31, 2016				
ALL YEARS COMBINED				
	THIS MONTH	YTD CHANGE	PRIOR YEAR END	FUND BALANCE
1. UNDERWRITING INCOME	1,406,669	16,880,058	67,955,573	84,835,632
2. CLAIM EXPENSES				
Paid Claims	188,578	4,299,176	11,327,435	15,626,611
Case Reserves	419,073	1,742,718	4,544,354	6,287,072
IBNR	(670,237)	2,515,603	10,860,735	13,376,338
Discounted Claim Value	5,116	(94,216)	(346,320)	(440,536)
TOTAL CLAIMS	(57,470)	8,463,281	26,386,203	34,849,484
3. EXPENSES				
Excess Premiums	498,196	6,463,138	28,343,174	34,806,312
Administrative	48,843	676,940	3,427,211	4,104,151
TOTAL EXPENSES	547,039	7,140,078	31,770,385	38,910,463
4. UNDERWRITING PROFIT (1-2-3)	917,100	1,276,699	9,798,985	11,075,684
5. INVESTMENT INCOME	6,003	56,580	153,790	210,371
6. PROFIT (4 + 5)	923,103	1,333,279	9,952,775	11,286,055
7. CEL APPROPRIATION CANCELLATION	0	0	212,516	212,516
8. DIVIDEND INCOME	0	88,409	101,047	189,456
9. DIVIDEND EXPENSE	0	(88,409)	(101,047)	(189,456)
10. INVESTMENT IN JOINT VENTURE	155,008	523,658	2,068,906	2,592,564
11. SURPLUS (6 + 7 + 8)	1,078,111	1,856,938	12,234,197	14,091,133
SURPLUS (DEFICITS) BY FUND YEAR				
2010	75,510	66,263	(151,551)	(85,288)
2011	10,146	(34,444)	1,049,272	1,014,828
2012	(41,479)	(12,717)	1,278,583	1,265,866
2013	46,658	233,636	4,225,475	4,459,111
2014	71,243	747,401	3,880,904	4,628,305
2015	627,964	428,062	1,951,513	2,379,574
2016	288,069	428,736		428,736
TOTAL SURPLUS (DEFICITS)	1,078,111	1,856,938	12,234,196	14,091,133
TOTAL CASH				27,857,410
CLAIM ANALYSIS BY FUND YEAR				
FUND YEAR 2010				
Paid Claims	1,487	23,867	2,628,285	2,652,151
Case Reserves	1,708	5,608	92,540	98,149
IBNR	(2,372)	(44,295)	68,957	24,662
Discounted Claim Value	(328)	133	(2,516)	(2,383)
TOTAL FY 2010 CLAIMS	496	(14,686)	2,787,266	2,772,579
FUND YEAR 2011				
Paid Claims	741	35,526	1,939,865	1,975,390
Case Reserves	(741)	(43,113)	254,193	211,080
IBNR	1,000	(59,402)	77,228	17,825
Discounted Claim Value	200	3,121	(6,839)	(3,718)
TOTAL FY 2011 CLAIMS	1,200	(63,869)	2,264,446	2,200,578
FUND YEAR 2012				
Paid Claims	2,426	183,340	1,505,816	1,689,157
Case Reserves	(2,426)	(50,660)	338,978	288,318
IBNR	(24,978)	(85,550)	145,729	60,179
Discounted Claim Value	428	2,831	(10,606)	(7,776)
TOTAL FY 2012 CLAIMS	(24,551)	49,961	1,979,917	2,029,879
FUND YEAR 2013				
Paid Claims	41,812	495,940	2,135,836	2,631,775
Case Reserves	(9,659)	(253,659)	1,137,999	884,340
IBNR	(46,312)	(470,741)	1,277,722	806,981
Discounted Claim Value	1,538	13,394	(49,350)	(35,957)
TOTAL FY 2013 CLAIMS	(12,620)	(215,067)	4,502,207	4,287,140
FUND YEAR 2014				
Paid Claims	120,095	1,216,176	2,250,678	3,466,854
Case Reserves	(102,522)	(735,058)	1,877,491	1,142,433
IBNR	(85,801)	(1,121,616)	2,716,202	1,594,587
Discounted Claim Value	13,354	55,703	(105,905)	(50,202)
TOTAL FY 2014 CLAIMS	(54,873)	(584,795)	6,738,466	6,153,671
FUND YEAR 2015				
Paid Claims	45,153	754,983	866,955	1,621,938
Case Reserves	8,264	738,076	843,153	1,581,229
IBNR	(660,629)	(1,926,640)	6,574,897	4,648,257
Discounted Claim Value	18,141	39,168	(171,104)	(131,936)
TOTAL FY 2015 CLAIMS	(589,070)	(394,413)	8,113,902	7,719,489
FUND YEAR 2016				
Paid Claims	(23,136)	1,589,345		1,589,345
Case Reserves	524,447	2,081,523		2,081,523
IBNR	148,855	6,223,847		6,223,847
Discounted Claim Value	(28,218)	(208,565)		(208,565)
TOTAL FY 2016 CLAIMS	621,948	9,686,149	0	9,686,149
COMBINED TOTAL CLAIMS	(57,470)	8,463,281	26,386,203	34,849,484

This report is based upon information which has not been audited nor certified by an actuary and as such may not truly represent the condition of the fund.

NEW JERSEY COUNTIES EXCESS JIF					
FINANCIAL FAST TRACK REPORT					
AS OF December 31, 2016					
ALL YEARS COMBINED					
	THIS MONTH	YTD CHANGE	PRIOR YEAR END	FUND BALANCE	
1.	UNDERWRITING INCOME	1,772,241	21,278,896	76,187,004	97,465,900
2.	CLAIM EXPENSES				
	Paid Claims	11,499	1,631,225	1,089,974	2,721,199
	Case Reserves	(7,383)	211,137	2,413,317	2,624,454
	IBNR	(104,247)	386,292	9,188,910	9,575,203
	Discounted Claim Value	23,619	(63,930)	(651,074)	(715,004)
	TOTAL CLAIMS	(76,513)	2,164,725	12,041,128	14,205,852
3.	EXPENSES				
	Excess Premiums	1,230,268	15,046,309	52,056,606	67,102,915
	Administrative	99,552	1,510,111	5,652,271	7,162,382
	TOTAL EXPENSES	1,329,819	16,556,419	57,708,877	74,265,297
4.	UNDERWRITING PROFIT (1-2-3)	518,935	2,557,752	6,436,999	8,994,751
5.	INVESTMENT INCOME	4,230	44,496	184,725	229,221
6.	PROFIT (4+5)	523,165	2,602,248	6,621,724	9,223,972
7.	Dividend	0	150,000	150,000	300,000
8.	Cancelled Appropriations	0	0	607,551	607,551
9.	SURPLUS (6-7-8)	523,165	2,452,248	5,864,173	8,316,421
SURPLUS (DEFICITS) BY FUND YEAR					
	2010	119,497	79,950	642,182	722,132
	2011	23,911	(228,041)	1,149,228	921,187
	2012	(186,502)	76,830	477,778	554,609
	2013	100,496	17,391	1,259,797	1,277,188
	2014	64,485	630,991	1,417,746	2,048,737
	2015	168,000	72,503	917,441	989,944
	2016	233,278	1,802,624		1,802,624
	TOTAL SURPLUS (DEFICITS)	523,165	2,452,248	5,864,172	8,316,420
	TOTAL CASH				19,865,780
CLAIM ANALYSIS BY FUND YEAR					
FUND YEAR 2010					
	Paid Claims	0	901	163,454	164,355
	Case Reserves	0	(0)	1	1
	IBNR	(125,645)	(161,546)	326,545	164,999
	Discounted Claim Value	6,363	8,203	(11,008)	(2,805)
	TOTAL FY 2010 CLAIMS	(119,283)	(152,442)	478,992	326,550
FUND YEAR 2011					
	Paid Claims	4,185	252,570	144,097	396,667
	Case Reserves	(185)	145,365	262,007	407,372
	IBNR	(39,000)	(242,935)	623,896	380,961
	Discounted Claim Value	11,446	2,492	(41,637)	(39,146)
	TOTAL FY 2011 CLAIMS	(23,554)	157,492	988,363	1,145,854
FUND YEAR 2012					
	Paid Claims	3,373	617,082	515,889	1,132,971
	Case Reserves	(3,374)	(425,807)	856,270	430,462
	IBNR	199,645	(275,974)	1,120,043	844,069
	Discounted Claim Value	(12,740)	12,663	(82,267)	(69,604)
	TOTAL FY 2012 CLAIMS	186,904	(72,037)	2,409,934	2,337,897
FUND YEAR 2013					
	Paid Claims	0	500,452	15,975	516,427
	Case Reserves	0	112,427	511,304	623,730
	IBNR	(105,000)	(647,878)	1,657,721	1,009,843
	Discounted Claim Value	5,093	24,991	(110,993)	(86,001)
	TOTAL FY 2013 CLAIMS	(99,907)	(10,009)	2,074,007	2,063,999
FUND YEAR 2014					
	Paid Claims	3,926	148,023	120,096	268,119
	Case Reserves	(3,927)	(171,387)	313,106	141,719
	IBNR	(74,999)	(661,637)	2,411,798	1,750,161
	Discounted Claim Value	11,296	63,175	(164,745)	(101,570)
	TOTAL FY 2014 CLAIMS	(63,704)	(621,825)	2,680,255	2,058,430
FUND YEAR 2015					
	Paid Claims	15	112,197	130,464	242,661
	Case Reserves	85	550,452	470,629	1,021,082
	IBNR	(185,100)	(737,649)	3,048,907	2,311,258
	Discounted Claim Value	17,899	36,004	(240,424)	(204,420)
	TOTAL FY 2015 CLAIMS	(167,101)	(38,996)	3,409,576	3,370,580
FUND YEAR 2016					
	Paid Claims	0	0		0
	Case Reserves	18	88		88
	IBNR	225,852	3,113,912		3,113,912
	Discounted Claim Value	(15,738)	(211,458)		(211,458)
	TOTAL FY 2016 CLAIMS	210,132	2,902,542	0	2,902,542
	COMBINED TOTAL CLAIMS	(76,513)	2,164,725	12,041,128	14,205,852

This report is based upon information which has not been audited nor certified by an actuary and as such may not truly represent the condition of the fund.

Camden County Insurance Commission										
CLAIM ACTIVITY REPORT										
AS OF	January 31, 2017									
COVERAGE LINE - PROPERTY										
CLAIM COUNT - OPEN CLAIMS										
Year	2010	2011	2012	2013	2014	2015	2016	2017	TOTAL	
December-16	0	0	0	0	0	0	3	0	3	
January-17	0	0	0	0	0	0	2	0	2	
NET CHGE	0	0	0	0	0	0	-1	0	-1	
Limited Reserves										\$695
Year	2010	2011	2012	2013	2014	2015	2016	2017	TOTAL	
December-16	-	-	-	-	190.00	90.00	1,100.00	-	\$1,380	
January-17	-	-	-	-	190.00	600.00	600.00	-	\$1,390	
NET CHGE	\$0	\$0	\$0	\$0	\$0	\$510	(\$500)	\$0	\$10	
Ltd Incurred	\$49,949	\$33,320	\$0	\$15,727	\$87,935	\$33,100	\$96,647	\$0	\$316,679	
COVERAGE LINE - GENERAL LIABILITY										
CLAIM COUNT - OPEN CLAIMS										
Year	2010	2011	2012	2013	2014	2015	2016	2017	TOTAL	
December-16	0	4	1	12	17	24	19	0	77	
January-17	0	4	2	10	14	23	21	2	76	
NET CHGE	0	0	1	-2	-3	-1	2	2	-1	
Limited Reserves										\$3,724
Year	2010	2011	2012	2013	2014	2015	2016	2017	TOTAL	
December-16	14,674.60	58,867.89	10,921.00	40,040.11	27,378.66	24,754.86	7,804.00	-	\$184,441	
January-17	14,674.60	58,867.89	11,021.00	133,418.47	25,878.66	23,754.86	15,274.00	100.00	\$282,989	
NET CHGE	\$0	\$0	\$100	\$93,378	(\$1,500)	(\$1,000)	\$7,470	\$100	\$98,548	
Ltd Incurred	\$517,399	\$305,580	\$291,619	\$226,780	\$26,150	\$29,915	\$32,393	\$100	\$1,429,937	
COVERAGE LINE - AUTO LIABILITY										
CLAIM COUNT - OPEN CLAIMS										
Year	2010	2011	2012	2013	2014	2015	2016	2017	TOTAL	
December-16	0	0	0	0	3	3	2	0	8	
January-17	0	0	0	0	3	3	2	0	8	
NET CHGE	0	0	0	0	0	0	0	0	0	
Limited Reserves										\$1,294
Year	2010	2011	2012	2013	2014	2015	2016	2017	TOTAL	
December-16	5,241.78	3,657.01	-	-	300.00	500.00	650.00	-	\$10,349	
January-17	5,241.78	3,657.01	-	-	300.00	500.00	650.00	-	\$10,349	
NET CHGE	\$0	\$0	\$0	\$0	\$0	\$0	\$0	\$0	\$0	
Ltd Incurred	\$115,207	\$46,030	\$45,000	\$0	\$5,868	\$10,375	\$689	\$0	\$223,169	
COVERAGE LINE - WORKERS COMP.										
CLAIM COUNT - OPEN CLAIMS										
Year	2010	2011	2012	2013	2014	2015	2016	2017	TOTAL	
December-16	4	9	9	14	18	21	60	0	135	
January-17	4	9	9	13	15	20	67	6	143	
NET CHGE	0	0	0	-1	-3	-1	7	6	8	
Limited Reserves										\$23,532
Year	2010	2011	2012	2013	2014	2015	2016	2017	TOTAL	
December-16	78,231.61	148,555.96	277,397.61	359,308.31	343,735.18	1,188,008.35	1,109,747.38	-	\$3,504,984	
January-17	77,314.79	146,453.29	274,186.32	342,525.75	329,090.09	1,167,515.23	1,019,496.38	8,536.06	\$3,365,118	
NET CHGE	(\$917)	(\$2,103)	(\$3,211)	(\$16,783)	(\$14,645)	(\$20,493)	(\$90,251)	\$8,536	(\$139,866)	
Ltd Incurred	\$2,078,732	\$1,791,766	\$2,148,839	\$1,743,514	\$1,987,146	\$2,253,960	\$2,051,239	\$9,000	\$14,064,196	
TOTAL ALL LINES COMBINED										
CLAIM COUNT - OPEN CLAIMS										
Year	2010	2011	2012	2013	2014	2015	2016	2017	TOTAL	
December-16	4	13	10	26	38	48	84	0	223	
January-17	4	13	11	23	32	46	92	8	229	
NET CHGE	0	0	1	-3	-6	-2	8	8	6	
Limited Reserves										\$15,982
Year	2010	2011	2012	2013	2014	2015	2016	2017	TOTAL	
December-16	\$98,148	\$211,081	\$288,319	\$399,348	\$371,604	\$1,213,353	\$1,119,301	\$0	\$3,701,154	
January-17	\$97,231	\$208,978	\$285,207	\$475,944	\$355,459	\$1,192,370	\$1,036,020	\$8,636	\$3,659,846	
NET CHGE	(\$917)	(\$2,103)	(\$3,111)	\$76,596	(\$16,145)	(\$20,983)	(\$83,281)	\$8,636	(\$41,308)	
Ltd Incurred	\$2,761,287	\$2,176,697	\$2,485,458	\$1,986,021	\$2,107,100	\$2,327,350	\$2,180,968	\$9,100	\$16,033,981	

**CAMDEN COUNTY INSURANCE COMMISSION
BILLS LIST**

Resolution No. 19-17

FEBRUARY 2017

WHEREAS, the Treasurer has certified that funding is available to pay the following bills: now, therefore,

BE IT RESOLVED that the Camden County Insurance Fund Commission, hereby authorizes the Commission Treasurer to issue warrants in payment of the following claims; and

BE IT FURTHER RESOLVED, that this authorization shall be made a permanent part of the records of the Commission.

FUND YEAR 2016

<u>Check Number</u>	<u>Vendor Name</u>	<u>Comment</u>	<u>Invoice Amount</u>
000465			
000465	BROWN & CONNERY, LLP	LEGAL SERV FOR ANCILLARY COV 12/31/2016	310.94
000465	BROWN & CONNERY, LLP	LEGAL SERV FOR ANCILLARY COV 12/31/2016	40.00
000465	BROWN & CONNERY, LLP	LEGAL SERV FOR ANCILLARY COV 12/31/2016	468.00
000465	BROWN & CONNERY, LLP	LEGAL SERV FOR ANCILLARY COV 12/31/2016	351.76
			1,170.70
000466			
000466	PERMA RISK MANAGEMENT SERVICES	1099 AATRIX E-FILING- 2016	14.95
			14.95
TOTAL PAYMENTS FY 2016			1,185.65

FUND YEAR 2017

<u>Check Number</u>	<u>Vendor Name</u>	<u>Comment</u>	<u>Invoice Amount</u>
000467			
000467	CAMDEN COUNTY MUNICIPAL JIF	CCJIF CLAIMS REFUND CHECK DEPOSIT -CCIC	3,016.81
			3,016.81
000468			
000468	CONNER STRONG & BUCKELEW	EXCESS LIAB- 1/1/17 - NAT'L CASUALTY CO	200.55
000468	CONNER STRONG & BUCKELEW	EXCESS LIAB 1/31/17 HALLMARK SPECIALITY	187,272.00
000468	CONNER STRONG & BUCKELEW	EXCESS AUTO LIAB 1/31/17 GENESIS INS CO	35,000.00
000468	CONNER STRONG & BUCKELEW	EXCESS LIAB 1/31/17 QBE INS CO	152,968.00
000468	CONNER STRONG & BUCKELEW	EX CESSLIAB 1/31/17 HALLMARK SPECIALITY	117,300.00
			492,740.55
000469			
000469	NEW JERSEY COUNTIES EXCESS JIF	CEL 1ST 2017 INSTALLMENT	2,646,461.13
			2,646,461.13
000470			
000470	BROWN & CONNERY, LLP	LEGAL SERV FOR ANCILLARY COV 1/31/2017	1,123.81
000470	BROWN & CONNERY, LLP	LEGAL SERV FOR ANCILLARY COV 1/31/2017	842.85
000470	BROWN & CONNERY, LLP	LEGAL SERV FOR ANCILLARY COV 01/31/2017	1,229.31
000470	BROWN & CONNERY, LLP	LEGAL SERV FOR ANCILLARY COV 01/31/2017	801.95
000470	BROWN & CONNERY, LLP	LEGAL SERV FOR ANCILLARY COV 1/31/2017	421.90
000470	BROWN & CONNERY, LLP	LEGAL SERV FOR ANCILLARY COV 1/31/2017	440.00
000470	BROWN & CONNERY, LLP	LEGAL SERV FOR ANCILLARY COV 1/31/2017	680.99
			5,540.81
000471			
000471	COMP SERVICES, INC.	CLAIMS ADMIN - 02/2017 - CCIC	18,250.00
000471	COMP SERVICES, INC.	CLAIM ADMIN - 02/2017 - CCPD	8,712.00
			26,962.00

000472			
000472	PERMA RISK MANAGEMENT SERVICES	POSTAGE FEE 01/2017	6.80
000472	PERMA RISK MANAGEMENT SERVICES	EXECUTIVE DIRECTOR FEE 02/2017	14,583.37
			14,590.17
000473			
000473	THE ACTUARIAL ADVANTAGE	ACTUARIAL SERVICES FEE - 02/2017 - CCPD	538.56
000473	THE ACTUARIAL ADVANTAGE	ACTUARIAL SERVICES FEE - 02/2017 - CCIC	311.44
			850.00
000474			
000474	COURIER-POST	ACCT: CHL-091698 - 2/1/17 - ADV'17 MTG S	28.16
000474	COURIER-POST	ACCT: CHL-091698 - 2/1/17 - ADV RESOLUTI	56.76
			84.92
000475			
000475	SPARK CREATIVE GROUP LLC	PROGRAMMING & WEBSITE UPDATES 2/2/17	236.25
			236.25
		TOTAL PAYMENTS FY 2017	3,190,482.64

TOTAL PAYMENTS ALL FUND YEARS \$ 3,191,668.29

Chairperson

Attest:

Dated: _____

I hereby certify the availability of sufficient unencumbered funds in the proper accounts to fully pay the above claims.

Treasurer

CAMDEN COUNTY INSURANCE COMMISSION
SUMMARY OF CASH TRANSACTIONS - ALL FUND YEARS COMBINED

Current Fund Year: 2016								
Month Ending: December								
	Property	Liability	Auto	Worker's Comp	NJ CEL	Admin	POL/EPL	TOTAL
OPEN BALANCE	1,838,909.36	8,323,477.16	1,224,989.73	15,437,642.74	2,067,022.35	(1,627,939.08)	1,045,589.04	28,309,691.29
RECEIPTS								
Assessments	516.74	5,888.94	1,434.38	21,915.80	42,749.47	8,886.38	0.00	81,391.70
Refunds	0.00	0.00	0.00	9,176.57	0.00	0.00	0.00	9,176.57
Invest Pymnts	0.00	0.00	0.00	0.00	0.00	6,003.17	0.00	6,003.17
Invest Adj	0.00	0.00	0.00	0.00	0.00	0.00	0.00	0.00
Subtotal Invest	0.00	0.00	0.00	0.00	0.00	6,003.17	0.00	6,003.17
Other *	0.00	0.00	0.00	0.00	0.00	0.00	0.00	0.00
TOTAL	516.74	5,888.94	1,434.38	31,092.37	42,749.47	14,889.55	0.00	96,571.44
EXPENSES								
Claims Transfers	500.00	34,138.23	51,716.46	391,079.28	0.00	0.00	0.00	477,433.97
Expenses	0.00	0.00	0.00	0.00	0.00	49,432.34	0.00	49,432.34
Other *	0.00	0.00	0.00	21,936.57	0.00	50.00	0.00	21,986.57
TOTAL	500.00	34,138.23	51,716.46	413,015.85	0.00	49,482.34	0.00	548,852.88
END BALANCE	1,838,926.09	8,295,227.87	1,174,707.65	15,055,719.26	2,109,771.82	(1,662,531.87)	1,045,589.04	27,857,409.85

SUMMARY OF CASH AND INVESTMENT INSTRUMENTS				
CAMDEN COUNTY INSURANCE COMMISSION				
ALL FUND YEARS COMBINED				
CURRENT MONTH	December			
CURRENT FUND YEAR	2016			
	Description:	Ins Comm	Workers Comp	Liability
	ID Number:	General A/C	Claims	Claims
	Maturity (Yrs)			
	Purchase Yield:			
	TOTAL for All			
	Accts & instruments			
Opening Cash & Investment Balance	\$28,377,673.68	28169765.08	-21980.87	229889.47
Opening Interest Accrual Balance	\$0.00	0	0	0
1	Interest Accrued and/or Interest Cost	\$0.00	\$0.00	\$0.00
2	Interest Accrued - discounted Instr.s	\$0.00	\$0.00	\$0.00
3	(Amortization and/or Interest Cost)	\$0.00	\$0.00	\$0.00
4	Accretion	\$0.00	\$0.00	\$0.00
5	Interest Paid - Cash Instr.s	\$5,988.23	\$5,917.38	\$20.89
6	Interest Paid - Term Instr.s	\$0.00	\$0.00	\$0.00
7	Realized Gain (Loss)	\$0.00	\$0.00	\$0.00
8	Net Investment Income	\$5,988.23	\$5,917.38	\$20.89
9	Deposits - Purchases	\$378,449.43	\$90,568.27	\$269,040.21
10	(Withdrawals - Sales)	-\$933,357.84	-\$678,758.27	-\$17,296.61
	Ending Cash & Investment Balance	\$27,828,753.50	\$27,587,492.46	\$9,777.27
	Ending Interest Accrual Balance	\$0.00	\$0.00	\$0.00
	Plus Outstanding Checks	\$183,960.34	\$10,350.00	\$171,936.34
	(Less Deposits in Transit)	\$0.00	\$0.00	\$0.00
	Balance per Bank	\$28,012,713.84	\$27,597,842.46	\$181,713.61
			\$181,713.61	\$233,157.77



**MEDICAL SAVINGS REPORT BY MONTH
CAMDEN COUNTY INSURANCE COMMISSION**

2017								
Month	Provider Billed Amount	Usual Customer Rate (UCR)80th percentile	Paid Amount	Gross Savings	% of Savings	ACS Network Fee	Net Savings	Network Utilization
January	301,129.50	\$299,261.96	\$163,306.71	\$135,955.25	45.43%	\$27,191.05	\$108,764.20	99.50%
February								
March								
April								
May								
June								
July								
August								
September								
October								
November								
December								
Totals:								
Total Bills Received		190						

CAMDEN COUNTY INSURANCE COMMISSION

SAFETY DIRECTOR'S REPORT

TO: Fund Commissioners
FROM: J.A. Montgomery Risk Control, Safety Director
DATE: February 15, 2017

CCIC SERVICE TEAM

<p>David McHale, Public Sector Director dmchale@jamontgomery.com Office: 732-736-5213 Cell: 732-673-4802</p>	<p>Glenn Prince, Associate Public Sector Director gprince@jamontgomery.com Office: 856-552-4744 Cell: 609-238-3949</p>	<p>Natalie Dougherty, Executive Assistant ndougherty@jamontgomery.com Office: 856-552-4738</p>
--	--	--

January – February 2017

RISK CONTROL ACTIVITIES

MEETINGS ATTENDED / TRAINING / LOSS CONTROL VISITS CONDUCTED

- **January 26:** Attended the CCIC meeting in Blackwood.
- **February 7:** Attended the CCIC Claims Committee Meeting in Blackwood.
- **February 15:** Attended the CCIC Safety Committee Meeting in Blackwood.

UPCOMING MEETINGS / TRAINING / LOSS CONTROL VISITS PLANNED

- **February 22:** One session of Employee Conduct/Violence Prevention training is scheduled for CCIC Public Safety.
- **February 23:** Plan to attend the CCIC Meeting in Blackwood.

CEL MEDIA LIBRARY

No Videos have been utilized in 2017.

SAFETY DIRECTOR BULLETINS

- PEOSH Reporting & Recording – January 23.
- Workplace Injury & Illness Recordkeeping Webinar – February 2.

NJPEOSH Recording and Reporting of Occupational Injuries and Illnesses

February 1st is the deadline to tabulate the Log of Work-Related Injuries and Illnesses (NJOSH-300). The Summary Log (NJOSH-300A) must be posted in a visible area for each establishment, where notices to employees are posted, from February 1 to April 30 of each year.

New Jersey requires all public employers to *record* occupational injuries and illnesses. In addition, certain serious injuries must be *reported* directly to New Jersey PEOSH within specified timeframes. The complete rules for recording and reporting injuries can be accessed at <http://nj.gov/health/peosh/record.shtml>

Recording of Occupational Injuries

There are two important forms for the recording of injuries. The *Log of Work-Related Injuries and Illnesses (NJOSH-300)* is a listing of work-related injuries and illness that is maintained throughout the year. Injuries and illnesses are entered into the *Log* within 7 days of being notified of the injury / illness. Five years of *NJOSH-300 Logs* must be readily available to NJPEOSH inspectors. The second form is the annual summary of work-related injuries, *NJOSH 300A Summary of Work-Related Injuries and Illnesses*. This summary is posted at each work establishment from February through April.

'Work-related' is defined as any event or exposure in the work environment either causing or contributing to the resulting condition, or significantly aggravating a pre-existing injury or illness. 'Work-related' is presumed for injuries and illnesses resulting from events occurring in the work environment, unless an exception given in OSHA 1904.5(b)(2) applies. Recordable work-related injuries and illnesses are those that result in:

- Death or loss of consciousness
- Days away from work, placement on restricted work activity, or a job transfer
- Medical treatment beyond first aid

Public employers must also record the following conditions if they have been determined to be work-related:

- Any needle stick injury or cut from an object that is contaminated with a potentially infectious material
- Any case requiring an employee to be medically removed under an OSHA health (chemical) standard
- A tuberculosis infection as evidenced by a positive skin test or diagnosis by a physician
- An employee's audiogram reveals a specified hearing Standard Threshold Shift in one or both ears

Reporting of Serious Occupational Injuries to NJPEOSH

New Jersey Public Employers must report fatalities to NJPEOSH **within eight (8) hours** of the occurrence, and report work-related hospitalizations, amputations, or loss of an eye **within 24 hours** by calling the 24-hour hotline (800) 624-1644 or the 24-hour fax line (609) 292-3749. Refer to the flow chart on page 2.

Links to additional resources

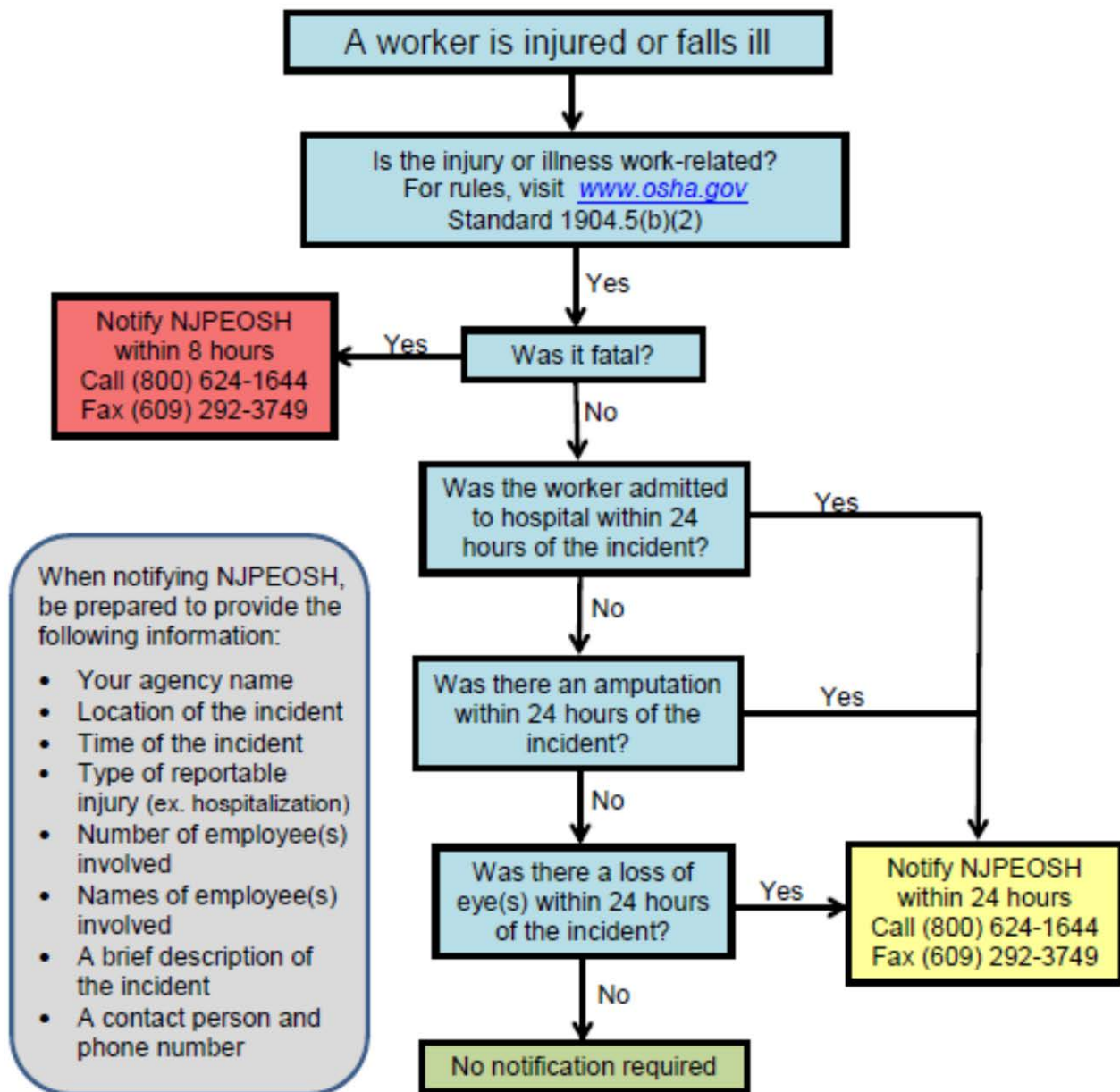
NJPEOSH 16-page guide to Recording and Reporting of Occupational Injuries and Illnesses is available at http://lwd.dol.state.nj.us/labor/forms_pdfs/lsse/NJOSH300.pdf

NPEOSH revised their Public Employee Alert #27 to reflect the new reporting regulations. It is available at http://lwd.dol.state.nj.us/labor/forms_pdfs/lsse/Alert27.pdf.

Now is also a good time to verify the PEOSH poster is posted. A copy can be downloaded at http://lwd.dol.state.nj.us/labor/forms_pdfs/lsse/wps35.pdf

This bulletin is intended for general information purposes only. It should not be construed as legal advice or legal opinion regarding any specific or factual situation. Always follow your organization's policies and procedures as presented by your manager or supervisor. For further information regarding this bulletin, contact your Safety Director at 877.398.3046.

NJPEOSH 2015 Injury Reporting Requirements



Notes:

- OSHA defines amputation as the traumatic loss of a limb or external body part, including a part, such as a limb or appendage, that has been severed, cut off (either completely or partially); fingertip amputations with or without bone loss; medical amputations resulting from irreparable damage; amputations of parts that have been reattached. Amputations do not include avulsions, enucleations, degloving, scalping, severed ears, or broken or chipped teeth.
- If a motor vehicle accident occurs in a construction work zone, you must report the fatality, in-patient hospitalization, amputation, or loss of an eye. If the motor vehicle accident occurred on a public street or highway, but not in a construction work zone, you do not have to report the fatality, hospitalization, amputation, or loss of an eye.
- A work-related fatality or in-patient hospitalization caused by a heart attack must be reported

Webinar: Will your recordkeeping practices keep PEOSH inspectors from citing you?

PEOSH has been getting tougher on recordkeeping ... As a result, your recordkeeping practices had better be squeaky-clean, or you could run afoul of PEOSH's rules and regulations without even realizing it.

This 16 minute webinar can help ensure your records are correct and your organization is compliant with PEOSH's latest rules, regulations, and record-keeping requirements. In this pre-recorded webinar, we'll cover the very latest information on recordkeeping practices and walk you step by step through PEOSH's detailed forms. You'll learn how to log employee incidents properly, maintain records in accordance with PEOSH's current standards and the timelines for reporting serious injuries.

Attendees can register and view the pre-recorded webinar by clicking on the link below.

https://connerstrong.adobeconnect.com/recordkeeping/event/event_info.html

Attached is a NJ Recordkeeping Overview document for your reference, please print out the NJOSH 300 and 300A forms found on page 14 and 15, both forms will be referenced during the webinar.

QUESTIONS? Contact the JA Montgomery Help Line (877) 398-3046

“Career Survival for First Line Supervisors”

Presented by J. A. Montgomery Risk Control and Paraclyte Training Consultants LLC

The “First Line Supervisor” is one of the most important and challenging assignments an officer can be tasked with during their law enforcement career. They are the officers who turn policy into action. They are required to provide leadership at all times, and their personnel will look for guidance and support from them during critical incidents. Making good decisions is crucial, and the First Line Supervisor needs to understand the importance of following current case law, agency rules, and policies to reduce liability and career failure.

New Jersey is one of the most plaintiff-friendly states, and liability claims can negatively affect the agency’s resources and reputation. Identifying the challenges of the assignment, preparing our personnel for the future will assist them with becoming successful leaders.

Target Audience – First Line Supervisors Police Officers

Presenter: Chief Keith F. Hummel (Ret.)

Purpose: This is a risk management program that was designed for First-Line Supervisors. Once this training is completed, the student will be able to identify the risks associated with their assignment, reduce liability claims, and understand the importance of their leadership role.

Goals: Liability reduction through training - topics include but are not limited to:

- Leadership and Organizational Responsibilities
- Decision Making Procedures
- Reducing Liability Claims
- Understanding Harassment and Retaliation in the Workplace
- Dealing with Difficult Employees
- Performance Improvement Plans
- Identifying and Understanding Ministerial Duties

Class Time: Approximately 3 ½ hours – Morning, afternoon and evening sessions available

Course / Contact Information:

Glenn Prince | Senior Risk Control Consultant
J. A. Montgomery Risk Control
40 Lake Center Executive Park
401 Route 73 North, Suite 300
Marlton, New Jersey 08053
P: 856-552-4744 | F: 856-552-4745
gprince@jamontgomery.com | connerstrong.com

Chief Keith F. Hummel (Ret.)
Paraclyte Training Consultants LLC
P.O. Box 562
Voorhees, New Jersey 08043
P: 856-470-0699
keithhummel@outlook.com

“Risk Management and Career Success”

RESOLUTION NO. 20-17

**CAMDEN COUNTY INSURANCE FUND COMMISSION
RESOLUTION FOR CLOSED SESSION**

WHEREAS, Section 8 of the Open Public Meetings Act, Chapter 231, P.L. 1975 permits the exclusion of the public from a meeting in certain circumstances; and

WHEREAS, this public body is of the opinion that such circumstances presently exist; now, therefore,

BE IT RESOLVED by the Camden County Insurance Fund Commission, County of Camden, State of New Jersey, as follows:

1. The public shall be excluded from discussion of the hereinafter-specified subject matter.
2. The general nature of the subject matter to be discussed:

CONTRACTS:

LITIGATION: 1276, 1094, 1620, 1738, 1507, 1747, 3836, 0464

PERSONNEL:

3. It is anticipated at this time that the above subject matter will be made public when the members of the Camden County Insurance Fund Commission have made final determination.
4. This resolution shall take effect immediately.

ADOPTED:

CHAIRPERSON

ATTEST:

VICE-CHAIRPERSON

APPENDIX I

**CAMDEN COUNTY INSURANCE COMMISSION
OPEN MINUTES
MEETING – December 8, 2016
CAMDEN COUNTY COLLEGE REGIONAL
EMERGENCY TRAINING CENTER
BOARD ROOM
420 WOODBURY-TURNERSVILLE ROAD Blackwood, NJ 08102
2:00 PM**

Meeting was called to order by Steve Williams, Commissioner. Open Public Meetings notice read into record.

PLEDGE OF ALLEGIANCE

ROLL CALL OF COMMISSIONERS:

Ross G. Angilella	Absent
Anna Marie Wright	Present
Steve Williams	Present

FUND PROFESSIONALS PRESENT:

Executive Director	PERMA Risk Management Services Bradford C. Stokes
Claims Service	AmeriHealth Casualty Services Denise Hall Steve Andrick Jaclyn Lindsey (via teleconference)
	Conner Strong & Buckelew Michelle Leighton
CEL Underwriting Manager	Conner Strong & Buckelew
Attorney	Laura J. Paffenroth, Esq.
Treasurer	
Safety Director	J.A. Montgomery Risk Control Glenn Prince
Auditor	Bowman & Company LLP
Risk Management Consultant (CCIA)	Hardenbergh Insurance Group

ALSO PRESENT:

Lou DiAngelo, Camden County
Edward H. Hill, Camden County Board of Social Services
Cathy Dodd, PERMA Risk Management Services (*via teleconference*)
Rachel Chwastek, PERMA Risk Management Services

APPROVAL OF MINUTES: OPEN & CLOSED MINUTES OF OCTOBER 27, 2016

Motion: Commissioner Wright
Second: Commissioner Williams
Vote: Unanimous

CORRESPONDENCE: None

COMMITTEE REPORTS:

SAFETY COMMITTEE: Mr. Prince reported the Safety Committee last met on November 16th. The Committee discussed their plans for 2017 and included the 2017 Meeting Schedule in the agenda. The next meeting is on December 19th. Mr. Prince asked if there were any questions and then concluded his report.

CLAIMS COMMITTEE: Ms. Leighton advised the claims committee met on November 4th and December 6th and there were PARS for review in closed session. Ms. Leighton advised the Best Practices Event on November 2nd was a great success and thank to all who participated. Ms. Leighton asked if there were any questions and then concluded her report.

EXECUTIVE DIRECTOR REPORT:

2017 Property & Casualty Budget Introduction – Included in the agenda was the 2017 proposed Property & Casualty Budget in the amount of \$16,753,318. The introductory budget represents a .76% decrease Commission wide. The assessments will be due on 3/15/17, 5/15/17 and 9/15/17. The proposed assessments will be distributed at the meeting. The Fund Office will advertise the proposed 2017 Budget in the Commission’s official newspaper.

Motion to introduce the 2017 Property and Casualty Budget in the amount of \$16,753,318 and schedule a public hearing on January 26, 2017 at 2:00 PM at the Camden County College Regional Training Center, 420 Woodbury-Turnersville Road, Blackwood, NJ 08102

Motion: Commissioner Wright
Second: Commissioner Williams
Vote: Unanimous

CEL Dividend – The CEL declared a dividend for the 2010 & 2011 Fund Years. The Camden County Insurance Commission’s share is \$88,409. Included in the agenda was the per member entity share of the dividend. Commission members have an option to receive a check or reduction in their 2017 assessment. The Fund Office will send a letter to each member entity to find out their preference.

Certificate of Insurance Issuance Report – Included in the agenda was the certificate of insurance issuance reports from the CEL listing those certificates issued for the period of 10/21/16 to 11/30/16. There were 2 certificate of insurances issued during this period.

MOTION TO APPROVE THE CERTIFICATE OF INSURANCE REPORT

Motion:	Commissioner Wright
Second:	Commissioner Williams
Vote:	Unanimous

NJ Excess Counties Insurance Fund (CELJIF) – A sub-committee met on October 17, 2016 to review the preliminary 2017 budget. The CELJIF met on October 27, 2016 and introduced the CEL 2017 Budget. A summary report of the meeting is included in the agenda. The public hearing for the 2017 Budget was held on November 17, 2016 and the budget was adopted in the amount of \$20,977,357. The Fund Commissioners also authorized a Professional Service Agreement to the incumbent, The Actuarial Advantage, Inc. for actuary services. The CELJIF will hold its 2017 Reorganization Meeting on February 23, 2017.

CCIC Financial Fast Track – Included in the agenda was a copy of the Financial Fast Track Report for the month of September. As of September 30, 2016, the report indicates the Commission has a surplus of \$13,052,009. Line 10 of the report, “Investment in Joint Venture” is the Camden County Insurance Commission’s share of the equity in the CEL. CCIC’s current equity in the CEL is \$2,454,219. The cash amount is \$27,224,864.

NJ CEL Property and Casualty Financial Fast Track (Page 13) - Included in the agenda on page 13 is a copy of the NJ CEL Financial Fast Track Report for the month of September. As of September 30, 2016, the report indicates the Fund has a surplus of \$7,631,542.

Claims Tracking Report – Included in the agenda on page 14 is the Claims Activity Report as of October 31, 2016. The Claims Activity Report monitors open and closed claims each month. The Executive Director will review the report with the Commission.

Meeting Dates for 2017 - Attached on page 15 for your consideration is the proposed CCIC Executive Committee meeting schedule for 2017. As we have done in the past there will be no meetings scheduled for August and November. However, meetings for these months could be scheduled if necessary with additional notice required by statute. The next meeting is scheduled for January 26, 2017 and the Reorganization meeting is scheduled for February 23, 2017. If the dates are acceptable a resolution will be prepared for approval at our next meeting. Please note

the College cannot accommodate us for the April meeting so we will either change the meeting date or meet at a different location.

New Jersey Counties Excess Joint Insurance Fund – Joint Insurance Claims Committees Best Practices Workshop – The Workshop was held at the Conner Strong & Buckelew Marlton office on Wednesday, November 2nd. Ms. Leighton will provide a verbal summary of the workshop.

Executive Director advised that concluded his report unless anyone had questions.

Executive Director's Report Made Part of Minutes.

TREASURER: Ms. Paffenroth advised that Mr. McPeak reviewed the November and December Bill List.

MOTION TO APPROVE RESOLUTION 56-16 NOVEBER BILL LIST IN THE AMOUNT OF \$59,912.58 AND 57-16 DECEMBER BILL LIST IN THE AMOUNT OF \$49,732.34

Motion:	Commissioner Williams
Second:	Commissioner Wright
Vote:	Unanimous

The monthly Treasurer's report was also included in the agenda.

ATTORNEY: No Report.

CLAIM SERVICE: Ms. Hall reviewed the Medical Savings Report for the month of November which was included in the agenda. Ms. Hall advised the total billed for the month of November was \$219,236.02 and the total paid was \$108,830.49 with a savings of \$104,041.48 or 48.88%. Ms. Hall advised the net savings was \$83,233.18 and network utilization was 98.90%. Ms. Hall advised that concluded her report unless anyone had anyone had questions.

SAFETY DIRECTOR: Mr. Prince reviewed the October – December 2016 Risk Control Activity Report which was included in the agenda. On 12/5 he completed a loss control visit with the police department and covered motor vehicle accidents, body worn cameras and written templates. Mr. Prince asked if there were any questions and then concluded his report.

Correspondence Made Part of Minutes.

OLD BUSINESS: None

NEW BUSINESS: None

PUBLIC COMMENT: None

MOTION TO OPEN MEETING TO PUBLIC

Motion: Commissioner Williams
Second: Commissioner Wright
Vote: Unanimous

Seeing no members of the public wishing to speak Commissioner Williams moved a motion to close the public comment portion of the meeting.

MOTION TO CLOSE MEETING TO PUBLIC

Motion: Commissioner Williams
Second: Commissioner Wright
Vote: Unanimous

CLOSED SESSION: Chairman Angilella read Resolution 58-16, Resolution for Closed Session, and requested a Motion for Executive Session (in accordance with the Open Public Meetings Act, N.J.S.A. 10:4-12) to discuss payment authority requests.

MOTION TO APPROVE RESOLUTION 58-16 FOR CLOSED SESSION

Motion: Commissioner Williams
Second: Commissioner Wright
Vote: Unanimous

MOTION TO RETURN TO OPEN SESSION

Motion: Commissioner Williams
Second: Commissioner Wright
Vote: Unanimous

Commissioner Williams made a motion to approve the PARS/SARS discussed during closed session.

MOTION TO APPROVE THE FOLLOWING PARS/SARS

CLAIM #	AMOUNT
1666	\$244,784.00
1688	\$ 66,441.72
1712	\$201,065.00
1692	\$ 51,421.30
5067	\$ 11,210.00
0435	\$ 93,020.00
0441	\$ 66,250.00
0444	\$ 36,956.00
1351	\$ 33,216.70
1703	\$ 72,118.00
1656	\$ 90,269.78
1666	\$244,784.00
7202	\$ 21,285.44

Motion: Commissioner Williams
Second: Commissioner Wright
Vote: Unanimous

Mr. Williams advised the next meeting is scheduled for Thursday, January 26, 2017 at 2:00 PM.

MOTION TO ADJOURN:

Motion: Commissioner Wright
Second: Commissioner Williams
Vote: Unanimous

MEETING ADJOURNED: 3:12 PM

Minutes prepared by: Rachel Chwastek, Assisting Secretary

**CAMDEN COUNTY INSURANCE COMMISSION
OPEN MINUTES
MEETING – January 23, 2017
CAMDEN COUNTY COLLEGE REGIONAL
EMERGENCY TRAINING CENTER
BOARD ROOM
420 WOODBURY-TURNERSVILLE ROAD
BLACKWOOD, NJ 08102
2:00 PM**

Meeting was called to order by Ross G. Angilella, Chairman. Open Public Meetings notice read into record.

PLEDGE OF ALLEGIANCE

ROLL CALL OF COMMISSIONERS:

Ross G. Angilella	Present
Anna Marie Wright	Present
Steve Williams	Absent

FUND PROFESSIONALS PRESENT:

Executive Director	PERMA Risk Management Services Bradford C. Stokes
Claims Service	AmeriHealth Casualty Services Denise Hall Steve Andrick Huguette Atherton Jaclyn Lindsey (via teleconference)
	Conner Strong & Buckelew Michelle Leighton
CEL Underwriting Manager	Conner Strong & Buckelew Edward Cooney
Attorney	Laura J. Paffenroth, Esq.
Treasurer	David McPeak
Safety Director	J.A. Montgomery Risk Control Glenn Prince
Risk Management Consultant (CCIA)	Hardenbergh Insurance Group Christina Violetti (via teleconference)

ALSO PRESENT:

Lou DiAngelo, Camden County
Robert Cornforth, Camden County MUA
Karl McConnell, Camden County (via teleconference)
Edward H. Hill, Camden County Board of Social Services
William Cook, Brown and Connery (via teleconference)
Cathy Dodd, PERMA Risk Management Services
Rachel Chwastek, PERMA Risk Management Services

APPROVAL OF DECEMBER 8, 2016 MINUTES TABLED UNTIL FEBRUARY

CORRESPONDENCE: None

COMMITTEE REPORTS:

SAFETY COMMITTEE: Mr. Prince reported the Safety Committee last met on January 18th. The Committee discussed a variety of issues including motor vehicle record checks on all employees that operate county vehicles and a safety director’s bulletin on 300A logs and their submission. Mr. Prince asked if there were any questions and then concluded his report.

CLAIMS COMMITTEE: Ms. Leighton advised the claims committee met on January 3rd and there were several PARS for review in closed session. Ms. Leighton asked if there were any questions and then concluded her report.

EXECUTIVE DIRECTOR REPORT:

2017 Property & Casualty Budget Introduction – At the December 8th meeting the 2017 Property & Casualty Budget was introduced. In accordance with regulations, the budget was advertised in the Commission’s official newspaper. The budget has not changed since it was introduced. The Public hearing for the budget will be held at this meeting.

MOTION TO OPEN THE PUBLIC HEARING OF THE 2017 BUDGET

Motion:	Chairman Angilella
Second:	Commissioner Wright
Vote:	Unanimous

A copy of the budget in the amount of \$16,753,318 was included in the agenda along with the assessments. The Executive Director discussed the budget with the Commission. The assessments are due on 3/15/17 (40%), 5/15/17 (30%) and 10/15/17, (30%).

MOTION TO CLOSE THE PUBLIC HEARING OF THE 2017 BUDGET

Motion: Chairman Angilella
Second: Commissioner Wright
Vote: Unanimous

MOTION TO ADOPT THE PUBLIC HEARING OF THE 2017 BUDGET AND CERTIFY ANNUAL ASSESSMENTS

Motion: Chairman Angilella
Second: Commissioner Wright
Vote: Unanimous

CEL Dividend – As was discussed last month the CEL declared a dividend for the 2010 & 2011 Fund Years. The Camden County Insurance Commission’s share is \$88,409. Each member entity has the choice of receiving its dividend in the form of a check or credit on their assessment bill. The Fund office sent a letter to the member entities for their choice. If the letter is not returned by February 3, 2017 their portion of the dividend will show as a credit on the 2017 Assessment billing.

Extraordinary Unspecifiable Services (EUS) Statements – Included in the agenda was the required Certification of Extraordinary Unspecifiable Services for coverages effective January 1, 2017 for the Camden County Department of Police Services. Also included was Resolution 1-17 awarding the Purchase of Excess Insurances for the Department of Police Services. The Resolution was reviewed by the Commission Attorney.

MOTION TO APPROVE RESOLUTION 1-17 AWARDING THE PURCHASE OF EXCESS INSURANCE FOR THE DEPARTMENT OF POLICE SERVICES

Motion: Chairman Angilella
Second: Commissioner Wright
Vote: Unanimous

2017 Plan of Risk Management – Included in the agenda was a copy of the 2017 Risk Management Plan. The changes were highlighted in yellow. The Executive Director/CEL Underwriting Manager will review the changes with the Commission.

MOTION TO APPROVE RESOLUTION 2-17 APPROVING THE 2017 PLAN OF RISK MANAGEMENT

Motion: Chairman Angilella
Second: Commissioner Wright
Vote: Unanimous

Meeting dates for 2017 – Included in the agenda was a copy of the 2017 Annual Meeting dates. Please note the location of the April meeting will be held at the DiPiero

Center, 512 Lakeland Road, Blackwood, NJ. There will be no meetings in August and November. Attached on page 19 is a copy of Resolution 3-17, Fixing Public Meeting Dates for Year 2017.

MOTION TO APPROVE RESOLUTION 3-17, FIXING PUBLIC MEETING DATES FOR YEAR 2017

Motion: Chairman Angilella
Second: Commissioner Wright
Vote: Unanimous

Certificate of Insurance Issuance Report – Included in the agenda was the certificate of insurance issuance reports from the CEL listing those certificates issued for the period of 12/1/16 to 12/31/16. There were 3 certificate of insurances issued during this period. The renewal certificates for 2017 have been issued and a summary report will appear in the next agenda.

MOTION TO APPROVE THE CERTIFICATE OF INSURANCE REPORT

Motion: Chairman Angilella
Second: Commissioner Wright
Vote: Unanimous

NJ Excess Counties Insurance Fund (CELJIF) – As mentioned at the December meeting, the CELJIF met on November 17, 2016 and adopted the 2017 budget in the amount of \$20,977,356 and certified the assessments. A summary report of the meeting was included in the agenda.

CCIC Financial Fast Tracks – Included in the agenda were copies of the Financial Fast Track Reports for the months of October and November. As of November 30, 2016 the report indicates the Commission has a surplus of \$13,013,023. Line 10 of the report, “Investment in Joint Venture” is the Camden County Insurance Commission’s share of the equity in the CEL. CCIC’s current equity in the CEL is \$2,437,556. The cash amount is \$28,309,691.

NJ CEL Property and Casualty Financial Fast Tracks - Included in the agenda were copies of the NJ CEL Financial Fast Track Reports for the months of October and November. As of November 30, 2016 the report indicates the Fund has a surplus of \$7,793,256.

Claims Tracking Report– Included in the agenda was the Claims Activity Report as of November 30, 2016. The Claims Activity Report monitors open and closed claims each month. The Executive Director will review the report with the Commission.

Auditor & Actuary Contracts – The Actuary and Auditor’s contract will expire on 2/28/17. The Fund Office will request quotes for both positions. The responses will be available for discussion and approval at the February meeting.

Executive Director advised that concluded his report unless anyone had questions.

Executive Director's Report Made Part of Minutes.

TREASURER: Mr. McPeak reviewed the January Bill List.

**MOTION TO APPROVE RESOLUTION 4-17 JANUARY BILL LIST
IN THE AMOUNT OF \$1,341,222.53**

Motion: Chairman Angilella
Second: Commissioner Wright
Vote: Unanimous

The monthly Treasurer’s report was also included in the agenda.

ATTORNEY: No Report.

CLAIM SERVICE: Ms. Hall reviewed the Medical Savings Report for the month of December which was included in the agenda. Ms. Hall advised the total billed for the month of December was \$262,694.31 and the total paid was \$112,691.32 with a savings of \$132,930.62 or 54.12%. Ms. Hall advised the net savings was \$106,344.50 and network utilization was 99.00%. Ms. Hall advised that concluded her report unless anyone had anyone had questions.

SAFETY DIRECTOR: Mr. Prince reviewed the December – February 2017 Risk Control Activity Report which was included in the agenda. Included in the agenda was a Safety Bulletin for Best Practices for Snow Emergencies. Also next month, Mr. Prince will be submitting a letter to provide a supervisor’s training program for the Metro, he is waiting for more information from Keith Hummel, a trainer the Commission has utilized in the past. Mr. Prince asked if there were any questions and then concluded his report.

Correspondence Made Part of Minutes.

OLD BUSINESS: None

NEW BUSINESS: None

PUBLIC COMMENT: None

MOTION TO OPEN MEETING TO PUBLIC

Motion: Chairman Angilella
Second: Commissioner Wright
Vote: Unanimous

Seeing no members of the public wishing to speak Chairman Angilella moved a motion to close the public comment portion of the meeting.

MOTION TO CLOSE MEETING TO PUBLIC

Motion: Chairman Angilella
Second: Commissioner Wright
Vote: Unanimous

CLOSED SESSION: Chairman Angilella read Resolution 5-17, Resolution for Closed Session, and requested a Motion for Executive Session (in accordance with the Open Public Meetings Act, N.J.S.A. 10:4-12) to discuss payment authority requests.

MOTION TO APPROVE RESOLUTION 5-17 FOR CLOSED SESSION

Motion: Chairman Angilella
Second: Commissioner Wright
Vote: Unanimous

MOTION TO RETURN TO OPEN SESSION

Motion: Chairman Angilella
Second: Commissioner Wright
Vote: Unanimous

Chairman Angilella made a motion to approve the PARS/SARS discussed during closed session.

MOTION TO APPROVE THE FOLLOWING PARS/SARS

CLAIM #	AMOUNT
1714	\$ 58,577.60
1438	\$ 92,618.43
1583	\$ 20,479.79
4670	\$ 17,113.15
4350	\$ 69,075.00
5617	\$ 78,766.56
0460	\$ 79,400.60
0452	\$ 178,650.00
8469	\$ 1,000,000.00

Motion: Chairman Angilella
Second: Commissioner Wright
Vote: Unanimous

Chairman Angilella advised the next meeting is scheduled for Thursday, February 23, 2017 at 2:00 PM.

MOTION TO ADJOURN:

Motion: Chairman Angilella
Second: Commissioner Wright
Vote: Unanimous

MEETING ADJOURNED: 2:41 PM

Minutes prepared by: Rachel Chwastek, Assisting Secretary

APPENDIX II
CERTIFICATE OF INSURANCE REPORT

**Camden County Insurance Commission
Certificate of Insurance Monthly Report
From 12/01/2016 to 01/31/2017**

Holder Name	Holder Address	Holder Code	Description of Operations	Issue Date	Coverages	Insured Name	Insured Address	Description of Operations (continued)
Pennsauken High School	800 Hylton Road Pennsauken, NJ 08110 Attn: Mr. Jack Killion Operation Supervisor	137	Evidence of insurance. All operations usual to County Governmental Entity. A3D	12/12/2016	GL EX AU	Camden County College	PO Box 200 Blackwood, NJ 08021	
Quaker Commercial Properties I	1103 Laurel Oak Rd. Ste. 103 Voorhees, NJ 08043 Attn: Jane Kovacs	209	Evidence of insurance. All operations usual to County Governmental Entity. (SEE PAGE 2) A3D	12/14/2016	GL EX AU WC	County of Camden	Division of Insurance, Company E: XS Worker Compensation County Courthouse \$1,000,000 520 Market Street, 9th XS Employers Liability \$5,000,000 x Floor Camden, NJ \$1,000,000 08102 Policy Term 1/1/17 to 1/1/18 Policy # SP4054261	
Quaker Commercial Properties II	1103 Laurel Oak Rd. Ste. 103 Voorhees, NJ 08043 Attn: Jane Kovacs	210	Evidence of insurance. All operations usual to County Governmental Entity. (SEE PAGE 2) A3D	12/14/2016	GL EX AU WC	County of Camden	Division of Insurance, Company E: XS Worker Compensation County Courthouse \$1,000,000 520 Market Street, 9th XS Employers Liability \$5,000,000 x Floor Camden, NJ \$1,000,000 08102 Policy Term 1/1/17 to 1/1/18 Policy # SP4054261	
Burroughs & Chapin Co., Ins.	3051 Ripken Way Blvd. Myrtle Beach, SC 29577	264	Evidence of insurance. All operations usual to County Governmental Entity. A3D	12/12/2016	GL EX AU	Camden County College	PO Box 200 Blackwood, NJ 08021	
Camden County Workforce Investment Board	Attn: Theo Primas, Prog. Evaluator 1111 Markless Rd, Suite 101 Cherry Hill, NJ 08003	268	Certificate holder the State of New Jersey and the County of Camden are additional insured where obligated by virtue of a written contract or written mutual aid agreement or other written agreement with the Named Assured, but only in respect to acts or op	12/12/2016	GL, AU, EX, MM	Camden County College	PO Box 200 Blackwood, NJ 08021	Evidence of Insurance. Camden County College has a \$ 5000 SIR on GL/Professional. Excess GL/Professional Limits: Professional-\$10,000,000 Each Medical Incident; GL - \$10,000,000 Each Claim; Policy Aggregate - \$20,000,000.
Camden County Workforce Investment Board	Attn: Theo Primas, Prog. Evaluator 1111 Markless Rd, Suite 101 Cherry Hill, NJ 08003	268	Certificate holder the State of New Jersey and the County of Camdden are additional insured where obligated by virtue of a written contract or written mutual aid agreement or other written agreement with the Named Assured, but only in respect to acts or o	12/12/2016	GL, AU, EX, MM	Camden County College	PO Box 200 Blackwood, NJ 08021	Evidence of Insurance. Camden County College has a \$ 5000 SIR on GL/Professional. Excess GL/Professional Limits: Professional-\$10,000,000 Each Medical Incident; GL - \$10,000,000 Each Claim; Policy Aggregate - \$20,000,000.
Camden County Workforce Investment Board	Attn: Theo Primas, Prog. Evaluator 1111 Markless Rd, Suite 101 Cherry Hill, NJ 08003	268	Certificate holder the State of New Jersey and the County of Camdden are additional insured where obligated by virtue of a written contract or written mutual aid agreement or other written agreement with the Named Assured, but only in respect to acts or o	12/12/2016	GL EX AU	Camden County College	PO Box 200 Blackwood, NJ 08021	Evidence of Insurance. Camden County College has a \$ 5000 SIR on GL/Professional. Excess GL/Professional Limits: Professional-\$10,000,000 Each Medical Incident; GL - \$10,000,000 Each Claim; Policy Aggregate - \$20,000,000.
Camden County Workforce Investment Board	Attn: Theo Primas, Prog. Evaluator 1111 Markless Rd, Suite 101 Cherry Hill, NJ 08003	268	Certificate holder the State of New Jersey and the County of Camden are additional insured where obligated by virtue of a written contract or written mutual aid agreement or other written agreement with the Named Assured, but only in respect to acts or op	1/10/2017	GL, AU, EX, MM	Camden County College	PO Box 200 Blackwood, NJ 08021	Evidence of Insurance. Camden County College has a \$ 5000 SIR on GL/Professional. Excess GL/Professional Limits: Professional-\$10,000,000 Each Medical Incident; GL - \$10,000,000 Each Claim; Policy Aggregate - \$20,000,000.
Extra Bases, LLC	d/b/a The Ripken Experience 3051 Ripken Way Blvd. Myrtle Beach, SC 29577	271	Evidence of insurance. All operations usual to County Governmental Entity. A3D	12/12/2016	GL EX AU	Camden County College	PO Box 200 Blackwood, NJ 08021	

**Camden County Insurance Commission
Certificate of Insurance Monthly Report
From 12/01/2016 to 01/31/2017**

Holder Name	Holder Address	Holder Code	Description of Operations	Issue Date	Coverages	Insured Name	Insured Address	Description of Operations (continued)
Ripkin Myrtle Beach Academy	3051 Ripken Way Blvd Myrtle Beach, SC 29577	296	Evidence of insurance. All operations usual to County Governmental Entity. A3D	12/12/2016	GL EX AU	Camden County College	PO Box 200 Blackwood, NJ 08021	
Virtua Center for Learning	1200 Howard Blvd., Ste 100 Mt. Laurel, NJ 08054 Attn: Nancy Felmlee, MSN	300	Evidence of insurance. All operations usual to County Governmental Entity. A3D	12/12/2016	GL EX AU	Camden County College	PO Box 200 Blackwood, NJ 08021	
Block 1401 Lot 33 LLC, Lot 33 Garage LLC,	Cooper Medical Services Inc. c/o Cooper University Hospital, Risk Mngt. One Cooper Plaza, 106G Keleman Camden, NJ 08103	314	Certificate holder Block 1401 Lot 33 LLC, Lot 33 Garage LLC, The Cooper Health System, Cooper University Hospital and Cooper Medical Risk Services are additional insureds where obligated by virtue of a written contract or written mutual aid agreement or	12/14/2016	GL EX AU WC	Camden County Improvement Authority	Voorhees Town Center 2220 Voorhees Town Center Voorhees, NJ 08043	or operations by or on behalf of the Named Assured, and subject to the limitations on coverage contained in any such written contract or written mutual aid agreement or other written agreement as respects to the following agreement: Ground Lease between B
TD Bank, N.A. ATIMA & ISAOA	2059 Springdale Road Cherry Hill, NJ 08003 ATTN: Collateral Insurance	316	Evidence of insurance. All operations usual to County Governmental Entity as respects as respects to property located at Lot 33, Block 1401, 1401 Benson & Broadway Streets, Camden, NJ. A3D *Loan numbers: 1363501906 and 16389989002.	12/14/2016	GL EX PR	Camden County Improvement Authority	Voorhees Town Center 2220 Voorhees Town Center Voorhees, NJ 08043	
TD Bank, N.A. ATIMA & ISAOA	2059 Springdale Road Cherry Hill, NJ 08003 ATTN: Collateral Insurance	316	Evidence of insurance. All operations usual to County Governmental Entity as respects as respects to property located at Lot 33, Block 1401, 1401 Benson & Broadway Streets, Camden, NJ. A3D *Loan numbers: 1363501906 and 16389989002.	12/14/2016	GL EX PR	Camden County Improvement Authority	Voorhees Town Center 2220 Voorhees Town Center Voorhees, NJ 08043	
TD Bank, N.A. ATIMA & ISAOA	2059 Springdale Road Cherry Hill, NJ 08003 ATTN: Collateral Insurance	316	Evidence of insurance. All operations usual to County Governmental Entity as respects as respects to property located at Lot 33, Block 1401, 1401 Benson & Broadway Streets, Camden, NJ. A3D *Loan numbers: 1363501906 and 16389989002.	12/14/2016	GL EX PR	Camden County Improvement Authority	Voorhees Town Center 2220 Voorhees Town Center Voorhees, NJ 08043	
TD Bank, N.A. ATIMA & ISAOA	2059 Springdale Road Cherry Hill, NJ 08003 ATTN: Collateral Insurance	316	Certificate holder is additional insured and mortgagee and lender loss payee* where obligated by virtue of a written contract or written mutual aid agreement or other written agreement with the Named Assured, but only in respect to acts or operations by o	12/30/2016	GL EX PR	Camden County Improvement Authority	Voorhees Town Center 2220 Voorhees Town Center Voorhees, NJ 08043	or other written agreement as respects to property located at Lot 33, Block 1401, 1401 Benson & Broadway Streets, Camden, NJ. *Loan numbers: 1363501906 and 16389989002.
Konica Minolta Premier Finance	1310 Madrid St., Ste. 101 Marshall, MN 56258	336	Evidence of insurance. All operations usual to County Governmetnal Entity. A3D	12/12/2016	GL EX AU	Camden County College	PO Box 200 Blackwood, NJ 08021	
Konica Minolta Premier Finance	1310 Madrid St., Ste. 101 Marshall, MN 56258	336	Evidence of insurance. All operations usual to County Governmetnal Entity. A3D	12/12/2016	GL EX AU	Camden County College	PO Box 200 Blackwood, NJ 08021	
Konica Minolta Premier Finance	1310 Madrid St., Ste. 101 Marshall, MN 56258	336	Evidence of insurance. All operations usual to County Governmetnal Entity. A3D	12/12/2016	GL EX AU	Camden County College	PO Box 200 Blackwood, NJ 08021	

**Camden County Insurance Commission
Certificate of Insurance Monthly Report
From 12/01/2016 to 01/31/2017**

Holder Name	Holder Address	Holder Code	Description of Operations	Issue Date	Coverages	Insured Name	Insured Address	Description of Operations (continued)
Konica Minolta Premier Finance	1310 Madrid St., Ste. 101 Marshall, MN 56258	336	Evidence of insurance. All operations usual to County Governmental Entity. A3D	12/12/2016	GL EX AU	Camden County College	PO Box 200 Blackwood, NJ 08021	
Burlington County One - Stop Career Center	795 Woodlane Road, PO Box 6000 Westhampton, NJ 08060 Attn: Ginny Furth, MIS Program Monitor	358	Evidence of insurance. All operations usual to County Governmental Entity. A3D	12/12/2016	GL EX AU	Camden County College	PO Box 200 Blackwood, NJ 08021	
Township of Gloucester	Department of Senior & Community Services 1575 Hider Lane Laurel Springs, NJ 08021	371	Evidence of insurance. All operations usual to County Governmental Entity. (SEE PAGE 2) A3D	12/14/2016	GL EX AU WC	County of Camden	Division of Insurance, County Courthouse 520 Market Street, 9th Floor Camden, NJ 08102	Company E: XS Worker Compensation Statutory x \$1,000,000 XS Employers Liability \$5,000,000 x \$1,000,000 Policy Term 1/1/17 to 1/1/18 Policy # SP4054261
Evidence of Insurance		377	Evidence of insurance. All operations usual to County Governmental Entity. A3D	12/14/2016	GL EX PR	County of Camden	Division of Insurance, County Courthouse 520 Market Street, 9th Floor Camden, NJ 08102	
Evidence of Insurance		377	Evidence of insurance. All operations usual to County Governmental Entity. A3D	12/14/2016	OTH	County of Camden	Division of Insurance, County Courthouse 520 Market Street, 9th Floor Camden, NJ 08102	
Evidence of Insurance		377	Evidence of insurance. All operations usual to County Governmental Entity. A3D	12/14/2016	GL EX AU WC	County of Camden	Division of Insurance, County Courthouse 520 Market Street, 9th Floor Camden, NJ 08102	Company E: XS Worker Compensation Statutory x \$1,000,000 XS Employers Liability \$5,000,000 x \$1,000,000 Policy Term 1/1/17 to 1/1/18 Policy # SP4054261
Evidence of Insurance		377	Evidence of insurance. All operations usual to County Governmental Entity. A3D	12/14/2016	PR	County of Camden	Division of Insurance, County Courthouse 520 Market Street, 9th Floor Camden, NJ 08102	
Evidence of Insurance		377	Evidence of insurance. All operations usual to County Governmental Entity. A3D	12/14/2016	OTH	County of Camden	Division of Insurance, County Courthouse 520 Market Street, 9th Floor Camden, NJ 08102	Company E: XS Worker Compensation Statutory x \$1,000,000 XS Employers Liability \$5,000,000 x \$1,000,000 Policy Term 1/1/17 to 1/1/18 Policy # SP4054261
Virtua Health Inc.	401 Route 73, North Lake Center Bldg Ste 401 Marlton, NJ 08053 Legal Department	386	Evidence of insurance. All operations usual to County Governmental Entity. A3D	12/12/2016	GL EX AU	Camden County College	PO Box 200 Blackwood, NJ 08021	
County of Camden, Div. of Insurance	County Courthouse 520 Market Street, 9th Floor Camden, NJ 08102-1375	387	Evidence of insurance. All operations usual to County Governmental Entity. A3D	12/12/2016	GL EX AU	Camden County College	PO Box 200 Blackwood, NJ 08021	

**Camden County Insurance Commission
Certificate of Insurance Monthly Report
From 12/01/2016 to 01/31/2017**

Holder Name	Holder Address	Holder Code	Description of Operations	Issue Date	Coverages	Insured Name	Insured Address	Description of Operations (continued)
Cooper University Hospital	The Cancer Institute of New Jersey 900 Centennial Blvd., Ste. M Voorhees, NJ 08043	398	Evidence of insurance. All operations usual to County Governmental Entity. A3D	12/12/2016	GL EX AU	Camden County College	PO Box 200 Blackwood, NJ 08021	
Cooper Physicians Family Practice	14 S. Broadway Gloucester City, NJ 08030	399	Evidence of insurance. All operations usual to County Governmental Entity. A3D	12/12/2016	GL EX AU	Camden County College	PO Box 200 Blackwood, NJ 08021	
UMDNJ - SOM Family Medicine	310 Creek Crossing Blvd. Hainesport, NJ 08036	406	Evidence of insurance. All operations usual to County Governmental Entity. A3D	12/12/2016	GL EX AU	Camden County College	PO Box 200 Blackwood, NJ 08021	
Cherry Hill Gynecology Associates	150 Century Parkway Mt. Laurel, NJ 08054 Attn: Cindy Davitt	407	Evidence of insurance. All operations usual to County Governmental Entity as respects a student externship for the CMA (Certified Medical Assistant) program. (SEE PAGE 2) A3D	1/19/2017	GL EX AU WC	Camden County College	PO Box 200 Blackwood, NJ 08021	Company E: XS Worker Compensation Statutory x \$1,000,000 XS Employers Liability \$5,000,000 x \$1,000,000 Policy Term 1/1/17 to 1/1/18 Policy # SP4054261
UMDNJ OB/GYN Specialties	570 Egg Harbor Rd., Ste. C-2 Sewell, NJ 08080 Attn: Donna Pantalone	410	Evidence of insurance. All operations usual to County Governmental Entity. A3D	12/12/2016	GL EX AU	Camden County College	PO Box 200 Blackwood, NJ 08021	
UMDNJ Pediatrics	University Pediatrics 405 Hurfville-Cross Keys Rd. Sewell, NJ 08080 Dr. Jacqueline Kaari	411	Evidence of insurance. All operations usual to County Governmental Entity. A3D	12/12/2016	GL EX AU	Camden County College	PO Box 200 Blackwood, NJ 08021	
UMDNJ Primary Care	570 Egg Harbor Rd., Suite C-2 Sewell, NJ 08080 ATTN: Dana Rivera	412	Evidence of insurance. All operations usual to County Governmental Entity. A3D	12/12/2016	GL EX AU	Camden County College	PO Box 200 Blackwood, NJ 08021	
Battleship of New Jersey Museum and Memorial	62 Battleship Place Camden, NJ 08103	444	Evidence of insurance. All operations usual to County Governmental Entity.	12/12/2016	GL EX AU	Camden County College	PO Box 200 Blackwood, NJ 08021	
Project Hope	519-525 West Street Camden, NJ 08013 ATT: Dolores Hagarity	482	Evidence of insurance. All operations usual to County Governmental Entity. A3D	12/14/2016	GL EX AU	Camden County College	PO Box 200 Blackwood, NJ 08021	
Harry Williams Recreation Ctr.	Broadway & Black Horse Pike Runnemede, NJ 08078	523	Certificate holder and Borough of Runnemede are additional insured where obligated by virtue of a written contract or written mutual aid agreement or other written agreement with the Named Assured, but only in respect to acts or operations by or on behalf	12/14/2016	GL EX AU WC	County of Camden	Division of Insurance, County Courthouse 520 Market Street, 9th Floor Camden, NJ 08102	Company E: XS Worker Compensation \$1,000,000 XS Employers Liability \$1,000,000 Policy Term 1/1/

**Camden County Insurance Commission
Certificate of Insurance Monthly Report
From 12/01/2016 to 01/31/2017**

Holder Name	Holder Address	Holder Code	Description of Operations	Issue Date	Coverages	Insured Name	Insured Address	Description of Operations (continued)
City of Camden	Protection, Compliance and Enforcement, Bureau of Local Environmental Mgmt and	542	Certificate holder is additional insured where obligated by virtue of a written contract or written mutual aid agreement or other written agreement with the Named Assured, but only in respect to acts or operations by or on behalf of the Named Assured, and	12/14/2016	GL EX AU WC	County of Camden	Division of Insurance, County Courthouse 520 Market Street, 9th Floor Camden, NJ 08102	as respects to the Camden County Parks Department use of the City of Camden's bucket truck: MG 38683 2000 Ford F450 Bucket with Aerial Lift 1FDXF46S0YEC12081, Current Estimated Value \$75,000.00 Company E: XS Worker Compe \$1,000,000
State of New Jersey; Dept. of	Department of the Treasury Fiscal & Resources PO Box 626 Trenton, NJ 08625-0626	553	Evidence of insurance. All operations usual to County Governmental Entity as respects the County Environmental Health Act (CEHA) 2017 grant requirement. (see page 2) A3D	12/14/2016	GL EX AU WC	County of Camden	County Courthouse 520 Market Street, 9th Floor Camden, NJ 08102	XS Employers Liability \$5,000,000 x Policy Term 1/1/17 to 1/1/18 Policy # SP4054261 Camden County Municipal Utilities Authority has a \$800,000 SIR on WC. The program stated above is excess of the Camden County Municipal Utilities Authority SIR. A3D
State of New Jersey	Stratford, NJ 08084 ATTN: Jane Shinkarow	555	Certificate holder is additional insured where obligated by virtue of a written contract or written mutual aid agreement or other written agreement with the Named Assured, but only in respect to acts or operations by or on behalf of the Named Assured, and	12/14/2016	GL EX AU WC	County of Camden	Division of Insurance, County Courthouse 520 Market Street, 9th Floor Camden, NJ 08102	Company E: XS Worker Compensation Statutory x \$1,000,000
Kennedy Memorial Hospital	Stratford, NJ 08084 ATTN: Jane Shinkarow	564	Evidence of insurance. All operations usual to County Governmental Entity. A3D	12/12/2016	GL EX AU	Camden County College	Blackwood, NJ 08021	
Kennedy Memorial Hospital	Stratford, NJ 08084 ATTN: Jane Shinkarow	564	Evidence of insurance. All operations usual to County Governmental Entity. A3D	12/12/2016	GL EX AU	Camden County College	Blackwood, NJ 08021	
Winslow Township School	Coopers Folly Road Atco, NJ 08004 Attn:	572	Evidence of insurance. All operations usual to County Governmental Entity. A3D	12/12/2016	GL EX AU	Camden County College	Blackwood, NJ 08021	
Millville Fire Department	420 Buck Street Millville, NJ 08332	575	Evidence of Insurance. All operations usual to County Governmental Entity. A3D	12/12/2016	GL EX AU	Camden County College	Blackwood, NJ 08021	
Rutgers University, Camden Campus	Camden, NJ 08102 Attn: Keith Williams	576	Evidence of insurance. All operations usual to County Governmental Entity. A3D	12/12/2016	GL EX AU	Camden County College	Blackwood, NJ 08021	
Camden County Technical School	343 Berlin-Cross Keys Road Sicklerville, NJ 08081	705	Certificate holder is additional insured where obligated by virtue of a written contract or written mutual aid agreement or other written agreement with the Named Assured, but only in respect to acts or operations by or on behalf of the Named Assured, and	12/14/2016	GL EX AU WC	County of Camden	Division of Insurance, County Courthouse 520 Market Street, 9th Floor Camden, NJ 08102	Company E: XS Worker Compensation Statutory x \$1,000,000 XS Employers Liability \$5,000,000 x Policy Term 1/1/17 to 1/1/18 Policy # SP4054261
Miller Auto Leasing Co	PO Box 4826 Timonium, MD 21094-4826	711	Certificate holder is additional insured and loss payee where obligated by virtue of a written contract or written mutual aid agreement or other written agreement with the Named Assured, but only in respect to acts or operations by or on behalf of the Nam	12/14/2016	AU EX PHYS	Camden County College	PO Box 200 Blackwood, NJ 08021	with respects to 2012 Ford XL #A59087, Lease # 59087 & 2012 Ford XL, #A59088, Lease # 59088. A3D

**Camden County Insurance Commission
Certificate of Insurance Monthly Report
From 12/01/2016 to 01/31/2017**

Holder Name	Holder Address	Holder Code	Description of Operations	Issue Date	Coverages	Insured Name	Insured Address	Description of Operations (continued)
Cherry Hill Public Schools	Bldg. 45 Ranoldo Terrace, PO Box 5015	724	Evidence of insurance. All operations usual to County Governmental Entity . A3D	12/12/2016	GL EX AU	Camden County College	Blackwood, NJ 08021	
TD Bank	1006 Astoria Boulevard Cherry Hill, NJ 08034	728	Governmental Entity as respects to Loan and Security Agreement Article V Section 5.30, Reference # 4587. (SEE PAGE 2) A3D	12/20/2016	GL EX AU WC	County of Camden	County Courthouse 520 Market Street, 9th Floor Camden, NJ \$1,000,000	XS Employers Liability \$5,000,000 x
TD Bank	1006 Astoria Boulevard Cherry Hill, NJ 08034	728	Governmental Entity as respects to Loan and Security Agreement Article V Section 5.20, Reference # 12701. (SEE PAGE 2) A3D	12/20/2016	GL EX AU WC	County of Camden	County Courthouse 520 Market Street, 9th Floor Camden, NJ \$1,000,000	XS Employers Liability \$5,000,000 x
TD Bank	1006 Astoria Boulevard Cherry Hill, NJ 08034	728	Evidence of insurance. All operations usual to County Governmental Entity as respects to Loan and Security Agreement Article V Section 7.05, Reference # 15677. (SEE PAGE 2) A3D	12/20/2016	GL EX AU WC	County of Camden	Division of Insurance, County Courthouse 520 Market Street, 9th Floor Camden, NJ 08102 \$1,000,000	Company E: XS Worker Compensation Statutory x XS Employers Liability \$5,000,000 x Policy Term 1/1/17 to 1/1/18 Policy # SP4054261
Katz Jewish Community Center	1301 Springdale Rd., Ste. 100 Cherry Hill, NJ 08003	755	Evidence of insurance. All operations usual to County Governmental Entity. A3D	12/12/2016	GL EX AU	Camden County College	PO Box 200 Blackwood, NJ 08021	
The Children's Hospital of Philadelphia	3535 Market St., 9th Flr Philadelphia, PA 19104 ATTN: Leon Jones	765	Evidence of insurance. All operations usual to County Governmental Entity. A3D	12/12/2016	GL EX AU	Camden County College	PO Box 200 Blackwood, NJ 08021	
The Children's Hospital of Philadelphia	3535 Market St., 9th Flr Philadelphia, PA 19104 ATTN: Leon Jones	765	Evidence of insurance. All operations usual to County Governmental Entity. A3D	12/12/2016	GL EX AU	Camden County College	PO Box 200 Blackwood, NJ 08021	
Sterling High School	801 Preston Avenue Somerdale, NJ 08083	783	Certificate holder is additional insured where obligated by virtue of a written contract or written mutual aid agreement or other written agreement with the Named Assured, but only in respect to acts or operations by or on behalf of the Named Assured, and	12/14/2016	GL EX AU WC	County of Camden	Division of Insurance, County Courthouse 520 Market Street, 9th Floor Camden, NJ 08102 \$1,000,000	Company E: XS Worker Compensation Statutory x XS Employers Liability \$5,000,000 x Policy Term 1/1/17 to 1/1/18 Policy # SP4054261
Live Nation Worldwide, Inc.	111 Presidential Boulevard, Suite 111 Bala Cynwyd, PA	796	Live Nation Worldwide, Inc. and its landlords, if any, and their respective parents, members, partners, affiliates, divisions and subsidiaries, and their respective officers, directors, shareholders, employees and representatives are additional insured wh	12/14/2016	GL EX AU WC	County of Camden	Division of Insurance, County Courthouse 520 Market Street, 9th Floor Camden, NJ 08102 \$1,000,000	the insured's event at the BB&T Pavillion in Camden, NJ on specified dates. Waiver of subrogation in favor of the certificate holder. A3D Company E: XS Worker Compensation Statutory x XS Employers Liability
Live Nation Worldwide, Inc.	111 Presidential Boulevard, Suite 111 Bala Cynwyd, PA	796	Live Nation Worldwide, Inc. and its landlords, if any, and their respective parents, members, partners, affiliates, divisions and subsidiaries, and their respective officers, directors, shareholders, employees and representatives are additional insured wh	12/14/2016	GL EX AU WC	County of Camden	Division of Insurance, County Courthouse 520 Market Street, 9th Floor Camden, NJ 08102 \$1,000,000	the insured's event at the BB&T Pavillion in Camden, NJ on specified dates. Waiver of subrogation in favor of the certificate holder. A3D Company E: XS Worker Compensation Statutory x XS Employers Liability

**Camden County Insurance Commission
Certificate of Insurance Monthly Report
From 12/01/2016 to 01/31/2017**

Holder Name	Holder Address	Holder Code	Description of Operations	Issue Date	Coverages	Insured Name	Insured Address	Description of Operations (continued)	
K.L. Holdings LLC c/o CBRE, Inc.	50 S. 16th St., Suite 3000 Philadelphia, PA 19102	802	Certificate holder is additional insured where obligated by virtue of a written contract or written mutual aid agreement or other written agreement with the Named Assured, but only in respect to acts or operations by or on behalf of the Named Assured, and	12/14/2016	GL EX AU WC	County of Camden	Division of Insurance, County Courthouse 520 Market Street, 9th Floor Camden, NJ 08102	Company E: XS Worker Compensation \$1,000,000 XS Employers Liability \$1,000,000 Policy Term 1/1/17 to 1/1/18 Policy # SP4054261 with respects to:	Statutory x \$5,000,000 x
Hale Trailer Brake & Wheel Inc.	P.O. Box 1400 Voorhees, NJ 08043	850	Certificate holder is additional insured and loss payee where obligated by virtue of a written contract or written mutual aid agreement or other written agreement with the Named Assured, but only in respect to acts or operations by or on behalf of the Nam	12/14/2016	GL EX PR	County of Camden	Division of Insurance, County Courthouse 520 Market Street, 9th Floor Camden, NJ 08102	Trl # 32424 # 00030089 2016 Markline \$15,475 Trl # 19833 #E51024186 2006 Markline \$ 9,700 Trl # 17859 #E40722686 2004 Markline \$ 8,775 Trl # 9957 #E-80915955 1999 Markline \$ 8,250 with respects to:	
Hale Trailer Brake & Wheel Inc.	P.O. Box 1400 Voorhees, NJ 08043	850	Certificate holder is additional insured and loss payee where obligated by virtue of a written contract or written mutual aid agreement or other written agreement with the Named Assured, but only in respect to acts or operations by or on behalf of the Nam	12/14/2016	GL EX PR	County of Camden	Division of Insurance, County Courthouse 520 Market Street, 9th Floor Camden, NJ 08102	Trl # 32424 # 00030089 2016 Markline \$15,475 Trl # 19833 #E51024186 2006 Markline \$ 9,700 Trl # 17859 #E40722686 2004 Markline \$ 8,775 Trl # 9957 #E-80915955 1999 Markline \$ 8,250 with respects to:	
Financial Services, Inc.	Center 1111 Old Eagle School Road Wayne, PA	874	Evidence of insurance. All operations usual to County Governmental Entity. A3D	12/12/2016	GL EX AU	Camden County College	Blackwood, NJ 08021	with regard to the Transportation Contract Renewal Package. A3D	
State of New Jersey, Department of Human Services	and Div of Family Development	887	Certificate holder is additional insured where obligated by virtue of a written contract or written mutual aid agreement or other written agreement with the Named Assured, but only in respect to acts or operations by or on behalf of the Named Assured, and	12/14/2016	GL EX AU WC	County of Camden	Division of Insurance, County Courthouse 520 Market Street, 9th Floor Camden, NJ 08102	Company E: XS Worker Compensation \$1,000,000 XS Employers Liability \$1,000,000 Policy Term 1	Statutory x \$5,000,000 x
Eastern High School	1401 Laurel Oak Road Voorhees, NJ 08043	890	Evidence of insurance. All operations usual to County Governmental Entity. (see page 2) A3D	12/14/2016	GL EX AU WC	County of Camden	Division of Insurance, County Courthouse 520 Market Street, 9th Floor Camden, NJ 08102	Company E: XS Worker Compensation \$1,000,000 XS Employers Liability \$1,000,000 Policy Term 1/1/17 to 1/1/18 Policy # SP4054261	Statutory x \$5,000,000 x
Eastern High School	1401 Laurel Oak Road Voorhees, NJ 08043	890	Evidence of insurance. All operations usual to County Governmental Entity as respects to use of Eastern High School, 1401 Laurel Oak Road, Voorhees, NJ 08043 on Saturday, April 8th, 2017 for Camden County Women's Health Conference Event. (see page 2) A3	1/4/2017	GL EX AU WC	County of Camden	Division of Insurance, County Courthouse 520 Market Street, 9th Floor Camden, NJ 08102	Company E: XS Worker Compensation \$1,000,000 XS Employers Liability \$1,000,000 Policy Term 1/1/17 to 1/1/18 Policy # SP4054261	Statutory x \$5,000,000 x
Delaware River Port Authority of PA & NJ	One Port Center, 2 Riverside Drive P. O. Box 1949 Camden, NJ 08101	895	Certificate holder is additional insured where obligated by virtue of a written contract or written mutual aid agreement or other written agreement with the Named Assured, but only in respect to acts or operations by or on behalf of the Named Assured, and	12/14/2016	GL EX AU WC	County of Camden	Division of Insurance, County Courthouse 520 Market Street, 9th Floor Camden, NJ 08102	Company E: XS Worker Compensation \$1,000,000 XS Employers Liability \$1,000,000 Policy Term 1/1/17 to 1/1/18 Policy # SP4054261	Statutory x \$5,000,000 x
County of Gloucester	Board of Chosen Freeholders It's Department & Agencies et al PO Box 337 Woodbury, NJ 08096	914	All operations usual to County Governmental Entity as respects evidence of insurance. (SEE PAGE 2) A3D	12/14/2016	GL EX AU WC	County of Camden	Division of Insurance, County Courthouse 520 Market Street, 9th Floor Camden, NJ 08102	Company E: XS Worker Compensation \$1,000,000 XS Employers Liability \$1,000,000 Policy Term 1/1/17 to 1/1/18 Policy # SP4054261	Statutory x \$5,000,000 x
New Jersey Historical Commission	225 West State Street Trenton, NJ 08625 Att: Sara R. Cureton, Director	915	Certificate holder is additional insured where obligated by virtue of a written contract or written mutual aid agreement or other written agreement with the Named Assured, but only in respect to acts or operations by or on behalf of the Named Assured, and	12/14/2016	GL EX AU	Camden County College	PO Box 200 Blackwood, NJ 08021		

**Camden County Insurance Commission
Certificate of Insurance Monthly Report
From 12/01/2016 to 01/31/2017**

Holder Name	Holder Address	Holder Code	Description of Operations	Issue Date	Coverages	Insured Name	Insured Address	Description of Operations (continued)
New Jersey Historical Commission	225 West State Street Trenton, NJ 08625 Att: Sara R. Cureton, Director	915	Certificate holder is additional insured where obligated by virtue of a written contract or written mutual aid agreement or other written agreement with the Named Assured, but only in respect to acts or operations by or on behalf of the Named Assured, and	12/14/2016	GL EX AU	Camden County College	PO Box 200 Blackwood, NJ 08021	
Hale Trailer Brake & Wheel, Inc.	Route 73 & Cooper Rd - PO Box 1400 Voorhees, NJ 08043	1012	Certificate holder is additional insured and loss payee where obligated by virtue of a written contract or written mutual aid agreement or other written agreement with the Named Assured, but only in respect to acts or operations by or on behalf of the Nam	12/14/2016	GL EX PR	County of Camden	Division of Insurance, County Courthouse 520 Market Street, 9th Floor Camden, NJ 08102	regarding 2 Container, Unit #23047, 2007, # 129256-15 value, \$4150 & Unit # 16288, 1997 # 022062-3. A3D
State of NJ - DFD Jersey, Dept. of Environmental Protection	P.O. Box 716 Trenton, NJ 08625-0716 Attn: Jamala Goodman Enforcement Bureau of Local Environmental Management Mail Code	1038	Evidence of insurance. All operations usual to County Governmental Entity as respects a Social Services for Homeless Grant. (see page 2) A3D	12/14/2016	GL EX AU WC	County of Camden	County Courthouse 520 Market Street, 9th Floor Camden, NJ	\$1,000,000 XS Employers Liability \$5,000,000 x
Evidence of Insurance		1056	Evidence of insurance. All operations usual to County Governmental Entity. (SEE PAGE 2) A3D	12/14/2016	GL EX AU WC	County of Camden	County Courthouse 520 Market Street, 9th Floor Camden, NJ	\$1,000,000 XS Employers Liability \$5,000,000 x
Evidence of Insurance		1060	Evidence of Insurance. All operations usual to County Governmental Entity. (SEE PAGE 2) A3D	12/14/2016	GL EX AU WC	Camden County Municipal Utilities Authority	1645 Ferry Avenue Camden, NJ 08104	Company E: XS Worker Compensation Statutory x \$1,000,000 XS Employers Liability \$5,000,000 x \$1,000,000 Policy Term 1/1/17 to 1/1/18 Policy # SP4054261
Evidence of Insurance		1060	Evidence of Insurance. All operations usual to County Governmental Entity. A3D	12/14/2016	CRIME	Camden County Municipal Utilities Authority	1645 Ferry Avenue Camden, NJ 08104	
Evidence of Insurance		1060	Evidence of Insurance. All operations usual to County Governmental Entity. A3D	12/14/2016	OTH	Camden County Municipal Utilities Authority	1645 Ferry Avenue Camden, NJ 08104	
Evidence of Insurance		1060	Evidence of Insurance. All operations usual to County Governmental Entity. A3D	12/14/2016	AU EX PHYS	Camden County Municipal Utilities Authority	1645 Ferry Avenue Camden, NJ 08104	
Evidence of Insurance		1060	Evidence of Insurance. All operations usual to County Governmental Entity. A3D	12/14/2016	OTH	Camden County Municipal Utilities Authority	1645 Ferry Avenue Camden, NJ 08104	
Evidence of Insurance		1060	Evidence of Insurance. All operations usual to County Governmental Entity. A3D	12/14/2016	PR	Camden County Municipal Utilities Authority	1645 Ferry Avenue Camden, NJ 08104	

**Camden County Insurance Commission
Certificate of Insurance Monthly Report
From 12/01/2016 to 01/31/2017**

Holder Name	Holder Address	Holder Code	Description of Operations	Issue Date	Coverages	Insured Name	Insured Address	Description of Operations (continued)
Joint Base	McGuire-Dix-Lakehurst JBMDL, NJ 08641	1077	Evidence of insurance. All operations usual to County Governmental Entity. A3D	12/12/2016	GL EX AU	Camden County College	PO Box 200 Blackwood, NJ 08021	
Joint Base	McGuire-Dix-Lakehurst JBMDL, NJ 08641	1077	Certificate holder is additional insured where obligated by virtue of a written contract or written mutual aid agreement or other written agreement with the Named Assured, but only in respect to acts or operations by or on behalf of the Named Assured, and	12/12/2016	GL EX AU	Camden County College	PO Box 200 Blackwood, NJ 08021	
Joint Base	McGuire-Dix-Lakehurst JBMDL, NJ 08641	1077	Certificate holder is additional insured where obligated by virtue of a written contract or written mutual aid agreement or other written agreement with the Named Assured, but only in respect to acts or operations by or on behalf of the Named Assured, and	12/12/2016	GL EX AU	Camden County College	PO Box 200 Blackwood, NJ 08021	
Inspira Health Network	1505 W. Sherman Ave. Vineland, NJ 08360 Attn: Emily Turnere	1091	Evidence of insurance. All operations usual to County Governmental Entity. A3D	12/12/2016	GL EX AU	Camden County College	PO Box 200 Blackwood, NJ 08021	
Inspira Health Network	1505 W. Sherman Ave. Vineland, NJ 08360 Attn: Emily Turnere	1091	Evidence of insurance. All operations usual to County Governmental Entity. A3D	12/12/2016	GL EX AU	Camden County College	PO Box 200 Blackwood, NJ 08021	
Camden County Dept. of Health and Human Services	520 Market Street Camden, NJ 08102	1094	Evidence of insurance. All operations usual to County Governmental Entity as respects the 2015 Human Services Grant. (SEE PAGE 2) A3D	12/14/2016	GL EX AU WC	County of Camden	Division of Insurance, County Courthouse 520 Market Street, 9th Floor Camden, NJ 08102	Company E: XS Worker Compensation \$1,000,000 XS Employers Liability \$5,000,000 x Policy Term 1/1/17 to 1/1/18 Policy # SP4054261
The Buccini/Pollin Group	322 A Street, Suite 300 Wilmington, DE 19801	1096	Evidence of insurance. All operations usual to	12/14/2016	GL EX AU WC	County of Camden	Division of Insurance, County Courthouse 520 Market Street, 9th Floor Camden, NJ 08102	Company E: XS Worker Compensation \$1,000,000 XS Employers Liability \$5,000,000 x Policy Term 1/1/17 to 1/1/18 Policy # SP4054261
Voorhees Pediatric	1304 Laurel Oak Road Voorhees, NJ, 08043 Attn: Scott Goldberg	1101	Evidence of insurance. All operations usual to County Governmental Entity. A3D	12/12/2016	GL EX AU	Camden County College	PO Box 200 Blackwood, NJ 08021	
Williams Scotsman	1901 Old Cuthbert Road Cherry Hill, NJ 08034	1108	Evidence of insurance. All operations usual to County Governmental Entity. (see page 2) A3D	12/14/2016	GL EX AU WC	County of Camden	Division of Insurance, County Courthouse 520 Market Street, 9th Floor Camden, NJ 08102	Company E: XS Worker Compensation \$1,000,000 XS Employers Liability \$5,000,000 x Policy Term 1/1/17 to 1/1/18 Policy # SP4054261
NJ Motor Vehicle Commission	225 E. State Street Trenton, NJ 08666	1112	Evidence of insurance. All operations usual to County Governmental Entity (SEE PAGE 2). A3D	12/14/2016	GL EX AU WC	County of Camden	Division of Insurance, County Courthouse 520 Market Street, 9th Floor Camden, NJ 08102	Company E: XS Worker Compensation \$1,000,000 XS Employers Liability \$5,000,000 x Policy Term 1/1/17 to 1/1/18 Policy # SP4054261

**Camden County Insurance Commission
Certificate of Insurance Monthly Report
From 12/01/2016 to 01/31/2017**

Holder Name	Holder Address	Holder Code	Description of Operations	Issue Date	Coverages	Insured Name	Insured Address	Description of Operations (continued)
Williams Scotsman, Inc.	901 S. Bond Street, Suite 600 Baltimore, MD 21231-3357	1114	Evidence of insurance. All operations usual to County Governmental Entity as respects to Unit Number: CPX-12436. A3D	12/14/2016	PR	Camden County Department of Police Services	800 Federal Street Camden, NJ 08103	
State of New Jersey	Department of the Treasury Contract Compliance Unit 33 West State 9th Floor, PO Box 236 Trenton, NJ 08625-0236	1116	Evidence of insurance. All operations usual to County Governmental Entity. Camden County Municipal Utilities Authority has a \$800,000 SIR on WC. The program stated above is excess of the Camden County Municipal Utilities Authority SIR. (SEE PAGE 2)	12/14/2016	GL EX AU WC	Camden County Municipal Utilities Authority	1645 Ferry Avenue Camden, NJ 08104	Company E: XS Worker Compensation \$1,000,000 XS Employers Liability \$5,000,000 x Policy Term 1/1/17 to 1/1/18 Policy # SP4054261 as respects to 200 Federal Street Block 139.02, Lot 1. A3D
Delaware River Port Authority	P.O. Box 1949, One Port Center 2 Riverside Dr. Camden, NJ 08101	1126	Certificate holder is additional insured where obligated by virtue of a written contract or written mutual aid agreement or other written agreement with the Named Assured, but only in respect to acts or operations by or on behalf of the Named Assured, and	12/14/2016	GL EX AU WC	County of Camden	Division of Insurance, County Courthouse 520 Market Street, 9th Floor Camden, NJ 08102	Company E: XS Worker Compensation \$1,000,000 XS Employers Liability \$5,000,000 x Policy Term 1/1/17
NJ State Council on the Arts	PO Box 306 225 W. State Street Trenton, NJ 08625	1166	Evidence of insurance. All operations usual to County Governmental Entity. A3D	12/12/2016	GL EX AU	Camden County College	PO Box 200 Blackwood, NJ 08021	
NJ State Council on the Arts	PO Box 306 225 W. State Street Trenton, NJ 08625	1166	Evidence of insurance. All operations usual to County Governmental Entity. A3D	12/12/2016	GL EX AU	Camden County College	PO Box 200 Blackwood, NJ 08021	
NJ State Council on the Arts	PO Box 306 225 W. State Street Trenton, NJ 08625	1166	Evidence of insurance. All operations usual to County Governmental Entity. A3D	12/12/2016	GL EX AU	Camden County College	PO Box 200 Blackwood, NJ 08021	
2600 ME Holdings, LLC	1441 Cedarview Avenue Lakewood, NJ 08701	1228	Certificate holder is additional insured where obligated by virtue of a written contract or written mutual aid agreement or other written agreement with the Named Assured, but only in respect to acts or operations by or on behalf of the Named Assured, and	12/14/2016	GL EX AU WC	County of Camden	Division of Insurance, County Courthouse 520 Market Street, 9th Floor Camden, NJ 08102	Company E: XS Worker Compensation \$1,000,000 XS Employers Liability \$5,000,000 x Policy Term 1/1/17 to 1/1/18 Policy # SP4054261 contained in any such written contract or written mutual aid agreement or other written agreement as respects the Waterford Elementary School Project.
Waterford Township School District	1106 Old White Horse Pike Waterford, NJ 08089	1303	Certificate holder, the State of NJ, NJ Department of Education, NJ Schools Development Authority, and NJ Economic Development Authority are additional insured where obligated by virtue of a written contract or written mutual aid agreement or other writte	1/26/2017	GL EX AU WC	Camden County Improvement Authority	Voorhees Town Center 2220 Voorhees Town Center Voorhees, NJ 08043	Company E: XS Worker Compensation \$1,000,000 XS Employers
New Jersey Department of Health	Division of HIV, STD, and TB Services PO Box 363 Trenton, NJ 08625	1317	Evidence of insurance. All operations usual to County Governmental Entity as respects the Tuberculosis Control, Specialty Clinic Services grant. (see page 2) A3D	12/14/2016	GL EX AU WC	County of Camden	Division of Insurance, County Courthouse 520 Market Street, 9th Floor Camden, NJ 08102	Company E: XS Worker Compensation \$1,000,000 XS Employers Liability \$5,000,000 x Policy Term 1/1/17 to 1/1/18 Policy # SP4054261
Marlton Rehabilitation Hospital	92 Brick Road Marlton, NJ 08053	1333	Evidence of insurance. All operations usual to County Governmental Entity. A3D	12/12/2016	GL EX AU	Camden County College	PO Box 200 Blackwood, NJ 08021	

**Camden County Insurance Commission
Certificate of Insurance Monthly Report
From 12/01/2016 to 01/31/2017**

Holder Name	Holder Address	Holder Code	Description of Operations	Issue Date	Coverages	Insured Name	Insured Address	Description of Operations (continued)
The State of New Jersey	By and for the Department of Environmental Protection	1335	Certificate holder is additional insured where obligated by virtue of a written contract or written mutual aid agreement or other written agreement with the Named Assured, but only in respect to acts or operations by or on behalf of the Named Assured, and	12/14/2016	GL EX AU WC	Camden County Municipal Utilities Authority	1645 Ferry Avenue Camden, NJ 08104	as respects to Grant Identifier: WM15-013. A3D Company E: XS Worker Compensation Statutory x \$1,000,000 XS Employers Liability \$5,000,000 x \$1,000,000 <input type="checkbox"/> Policy Term 1/1/17 to 1/1/18 Policy # SP40542
Atlanticare Medical Center	Mainland Campus Atlantic City, NJ 08401	1356	Certificate holder is additional insured where obligated by virtue of a written contract or written mutual aid agreement or other written agreement with the Named Assured, but only in respect to acts or operations by or on behalf of the Named Assured, and	12/12/2016	GL EX AU	Camden County College	PO Box 200 Blackwood, NJ 08021	
Bancroft Haddonfield Campus	425 Kings Highway East Haddonfield, NJ 08033	1357	Evidence of insurance. All operations usual to County Governmental Entity. A3D	12/12/2016	GL EX AU	Camden County College	PO Box 200 Blackwood, NJ 08021	
Brookfield Schools	1009 Berlin Road Cherry Hill, NJ 08034	1358	Evidence of insurance. All operations usual to County Governmental Entity. A3D	12/12/2016	GL EX AU	Camden County College	PO Box 200 Blackwood, NJ 08021	
Camden City High School	Baird Avenue and Park Boulevard Camden, NJ 08103	1359	Evidence of insurance. All operations usual to County Governmental Entity. A3D	12/12/2016	GL EX AU	Camden County College	PO Box 200 Blackwood, NJ 08021	
Camden City Board of Education	201 N. Front Street Camden, NJ 08102	1360	Evidence of insurance. All operations usual to County Governmental Entity. A3D	12/12/2016	GL EX AU	Camden County College	PO Box 200 Blackwood, NJ 08021	
Camden County Animal Shelter	125 County House Road Blackwood, NJ 08012 Attn: Vicki Rowland	1361	Evidence of insurance. All operations usual to County Governmental Entity. A3D	12/12/2016	GL EX AU	Camden County College	PO Box 200 Blackwood, NJ 08021	
Camden County Health Service Ctr.	20 Woodbury-Turnersville Road Blackwood, NJ 08012 Attn: Karyn Gilmore, Admin. Asst.	1363	Evidence of insurance. All operations usual to County Governmental Entity. A3D	12/12/2016	GL EX AU	Camden County College	PO Box 200 Blackwood, NJ 08021	
Camden County Improvement Authority	County Guaranteed Lease Rev 101 Haddonfield Road, 2nd Floor Cherry Hill, NJ 08002	1364	Evidence of insurance. All operations usual to County Governmental Entity. A3D	12/20/2016	GL EX AU WC	County of Camden	Division of Insurance, County Courthouse 520 Market Street, 9th Floor Camden, NJ 08102	Company E: XS Worker Compensation Statutory x \$1,000,000 XS Employers Liability \$5,000,000 x \$1,000,000 Policy Term 1/1/17 to 1/1/18 Policy # SP4054261
Camden County Improvement Authority	County Guaranteed Lease Rev 101 Haddonfield Road, 2nd Floor Cherry Hill, NJ 08002	1364	Evidence of insurance. All operations usual to County Governmental Entity. (SEE PAGE 2) A3D	12/20/2016	GL EX AU WC	County of Camden	Division of Insurance, County Courthouse 520 Market Street, 9th Floor Camden, NJ 08102	Company E: XS Worker Compensation Statutory x \$1,000,000 XS Employers Liability \$5,000,000 x \$1,000,000 Policy Term 1/1/17 to 1/1/18 Policy # SP4054261

**Camden County Insurance Commission
Certificate of Insurance Monthly Report
From 12/01/2016 to 01/31/2017**

Holder Name	Holder Address	Holder Code	Description of Operations	Issue Date	Coverages	Insured Name	Insured Address	Description of Operations (continued)
Camden County Technical School	6008 Browning Road Pennsauken, NJ 08109	1365	Evidence of insurance. All operations usual to County Governmental Entity. A3D	12/12/2016	GL EX AU	Camden County College	PO Box 200 Blackwood, NJ 08021	
Camden County Technical School	343 Berlin-Cross Keys Road Sicklerville, NJ 08081	1366	Evidence of insurance. All operations usual to County Governmental Entity. A3D	12/12/2016	GL EX AU	Camden County College	PO Box 200 Blackwood, NJ 08021	
Cooper University Health Care	Tyrone Sturdivant, MPH Program Assistant, The Urban Health Institute 3 Cooper Plaza, Suite 211, Camden, NJ 08103	1370	Evidence of insurance. All operations usual to County Governmental Entity. A3D	12/14/2016	GL EX AU	Camden County College	PO Box 200 Blackwood, NJ 08021	
Cooper University Health Care	Tyrone Sturdivant, MPH Program Assistant, The Urban Health Institute 3 Cooper Plaza, Suite 211, Camden, NJ 08103	1370	Evidence of insurance. All operations usual to County Governmental Entity. A3D	12/14/2016	GL EX AU	Camden County College	PO Box 200 Blackwood, NJ 08021	
Cooper Plaza Operating Co.	DBA S. Jersey Health Care Center Township Cooper Plaza Camden, NJ 08103 Attn: Celeste Johnson	1372	Evidence of insurance. All operations usual to County Governmental Entity. A3D	12/12/2016	GL EX AU	Camden County College	PO Box 200 Blackwood, NJ 08021	
Cooper University Hospital	One Cooper Plaza Camden, NJ 08103	1373	Evidence of insurance. All operations usual to County Governmental Entity. A3D	12/12/2016	GL EX AU	Camden County College	PO Box 200 Blackwood, NJ 08021	
Cooper West	5101 North Park Drive Pennsauken, NJ 08109 Attn: Tyrone Sturdivant	1374	Evidence of insurance. All operations usual to County Governmental Entity. A3D	12/12/2016	GL EX AU	Camden County College	PO Box 200 Blackwood, NJ 08021	
Kennedy Health System	2201 Chapel Avenue, West Cherry Hill, NJ 08002	1382	Evidence of insurance. All operations usual to County Governmental Entity. A3D	12/12/2016	GL EX AU	Camden County College	PO Box 200 Blackwood, NJ 08021	
Kennedy Health System	2201 Chapel Avenue, West Cherry Hill, NJ 08002	1382	Evidence of insurance. All operations usual to County Governmental Entity. A3D	12/12/2016	GL EX AU	Camden County College	PO Box 200 Blackwood, NJ 08021	
NJ Department of Education	Office of Vocational Technology GED Testing Unit PO Box 500 Trenton, NJ 08625	1385	Evidence of insurance. All operations usual to County Governmental Entity. A3D	12/12/2016	GL EX AU	Camden County College	PO Box 200 Blackwood, NJ 08021	

**Camden County Insurance Commission
Certificate of Insurance Monthly Report
From 12/01/2016 to 01/31/2017**

Holder Name	Holder Address	Holder Code	Description of Operations	Issue Date	Coverages	Insured Name	Insured Address	Description of Operations (continued)
NJ Veterans Memorial Home	524 NW Boulevard Vineland, NJ 08360 ATTN: Barbara Loughrey	1387	Evidence of insurance. All operations usual to County Governmental Entity. A3D	12/12/2016	GL EX AU	Camden County College	PO Box 200 Blackwood, NJ 08021	
NJ Veterans Memorial Home	524 NW Boulevard Vineland, NJ 08360 ATTN: Barbara Loughrey	1387	Evidence of insurance. All operations usual to County Governmental Entity. A3D	12/12/2016	GL EX AU	Camden County College	PO Box 200 Blackwood, NJ 08021	
Saint Mary's Catholic Home	210 St. Mary's Drive Cherry Hill, NJ 08003 Attn: Jaimini Raval, RN	1390	Evidence of insurance. All operations usual to County Governmental Entity. A3D	12/12/2016	GL EX AU	Camden County College	PO Box 200 Blackwood, NJ 08021	
Virtua Health, Inc.	Castle Program 1000 Atlantic Avenue Camden, NJ 08103 Attn: Ron DeFeo	1395	Evidence of insurance. All operations usual to County Governmental Entity. A3D	12/12/2016	GL EX AU	Camden County College	PO Box 200 Blackwood, NJ 08021	
Cape Regional Medical Center	2 Stone Harbor Boulevard Cape May Court House, NJ 08210 Attn: Barbara Moore	1396	Evidence of insurance. All operations usual to County Governmental Entity. A3D	12/12/2016	GL EX AU	Camden County College	PO Box 200 Blackwood, NJ 08021	
United Way of Greater Philadelphia and	Southern New Jersey 1709 Benjamin Franklin Parkway Philadelphia, PA 19103	1397	Evidence of insurance. All operations usual to County Governmental Entity. A3D	12/12/2016	GL EX AU	Camden County College	PO Box 200 Blackwood, NJ 08021	
Virtua Memorial Hospital	175 Madison Avenue Mount Holly, NJ 08060 Att: Director of Laboratory Operations	1399	Evidence of insurance. All operations usual to County Governmental Entity. A3D	12/12/2016	GL EX AU	Camden County College	PO Box 200 Blackwood, NJ 08021	
The Fountain at Cedar Parke	114 Hayes Mill Road Atco, NJ 08008 Attn: Karen Corneal, Administrator	1400	Evidence of insurance. All operations usual to County Governmental Entity. A3D	12/12/2016	GL EX AU	Camden County College	PO Box 200 Blackwood, NJ 08021	
The Fountain at Cedar Parke	114 Hayes Mill Road Atco, NJ 08008 Attn: Karen Corneal, Administrator	1400	Evidence of insurance. All operations usual to County Governmental Entity. A3D	12/12/2016	GL EX AU	Camden County College	PO Box 200 Blackwood, NJ 08021	
Camden Coalition of Healthcare Providers	800 Front Street 7th Floor Camden, NJ 08102 Attn: Mark Humoweicki	1402	Evidence of insurance. All operations usual to County Governmental Entity. A3D	12/12/2016	GL EX AU	Camden County College	PO Box 200 Blackwood, NJ 08021	

**Camden County Insurance Commission
Certificate of Insurance Monthly Report
From 12/01/2016 to 01/31/2017**

Holder Name	Holder Address	Holder Code	Description of Operations	Issue Date	Coverages	Insured Name	Insured Address	Description of Operations (continued)
Animal Welfare Association	509 Centennial Boulevard Voorhees, NJ 08043 ATTN: Judi Russo, Director	1417	Evidence of insurance. All operations usual to County Governmental Entity. CLD	12/7/2016	GL EX AU	Camden County College	PO Box 200 Blackwood, NJ 08021	
Animal Welfare Association	509 Centennial Boulevard Voorhees, NJ 08043 ATTN: Judi Russo, Director	1417	Evidence of insurance. All operations usual to County Governmental Entity. A3D	12/12/2016	GL EX AU	Camden County College	PO Box 200 Blackwood, NJ 08021	
The Salvation Army	1865 Harrison Avenue Camden, NJ 08105	1429	Evidence of insurance. All operations usual to County Governmental Entity as respects use of the community room. (see page 2) A3D	12/14/2016	GL EX AU WC	County of Camden	Division of Insurance, County Courthouse 520 Market Street, 9th Floor Camden, NJ 08102	Company E: XS Worker Compensation \$1,000,000 XS Employers Liability \$5,000,000 x Policy Term 1/1/17 to 1/1/18 Policy # SP4054261
The Salvation Army	1865 Harrison Avenue Camden, NJ 08105	1429	Evidence of insurance. All operations usual to County Governmental Entity as respects use of the community room. (see page 2) A3D	12/14/2016	GL EX AU WC	County of Camden	Division of Insurance, County Courthouse 520 Market Street, 9th Floor Camden, NJ 08102	Company E: XS Worker Compensation \$1,000,000 XS Employers Liability \$5,000,000 x Policy Term 1/1/17 to 1/1/18 Policy # SP4054261
Camden County College	200 College Drive Blackwood, NJ 08102	1516	Evidence of insurance. All operations usual to County Governmental Entity. (see page 2) A3D	12/14/2016	GL EX AU WC	County of Camden	Division of Insurance, County Courthouse 520 Market Street, 9th Floor Camden, NJ 08102	Company E: XS Worker Compensation \$1,000,000 XS Employers Liability \$5,000,000 x Policy Term 1/1/17 to 1/1/18 Policy # SP4054261
NJ Department of Transportation	Division of Support Services Attn: Raymond Carbone 1035 Parkway Avenue Ewing Township, NJ 08618-2309	1520	Evidence of insurance. All operations usual to County Governmental Entity. Camden County Municipal Utilities has an \$800,000 SIR on WC. The program stated above is excess of the Camden County Municipal Utilities SIR. (SEE PAGE 2)	12/14/2016	GL EX AU WC	Camden County Municipal Utilities Authority	1645 Ferry Avenue Camden, NJ 08104	Company E: XS Worker Compensation \$1,000,000 XS Employers Liability \$5,000,000 x Policy Term 1/1/17 to 1/1/18 Policy # SP4054261
Barnes & Noble College Booksellers, LLC	120 Mountain View Boulevard Basking Ridge, NJ 07920 USA	1521	Evidence of insurance. All operations usual to County Governmental Entity. A3D	12/12/2016	GL EX AU	Camden County College	PO Box 200 Blackwood, NJ 08021	
Camden County Dept. of Health and Human Services	520 Market Street Camden, NJ 08102	1523	Evidence of insurance. All operations usual to County Governmental Entity as respects the 2016 Human Services Grant. (see page 2) A3D	12/14/2016	GL EX AU WC	County of Camden	Division of Insurance, County Courthouse 520 Market Street, 9th Floor Camden, NJ 08102	Company E: XS Worker Compensation \$1,000,000 XS Employers Liability \$5,000,000 x Policy Term 1/1/17 to 1/1/18 Policy # SP4054261
Department of Events and Community Outreach	1301 Park Blvd. Cherry Hill, NJ 08002	1547	Evidence of insurance. All operations usual to County Governmental Entity as respects 9 dances at the Bellmawr Ball Room, 29 Lewis Ave., Bellmawr, NJ 08031. (see page 2) A3D	12/14/2016	GL EX AU WC	County of Camden	Division of Insurance, County Courthouse 520 Market Street, 9th Floor Camden, NJ 08102	Company E: XS Worker Compensation \$1,000,000 XS Employers Liability \$5,000,000 x Policy Term 1/1/17 to 1/1/18 Policy # SP4054261
Burlington County Board of Chosen Freeholders	Insurance and Risk 49 Rancocas Rd, Box 6000 Mt. Holly, NJ 08060-6000	1553	Evidence of insurance. All operations usual to County Governmental Entity. A3D	12/12/2016	GL EX AU	Camden County College	PO Box 200 Blackwood, NJ 08021	

**Camden County Insurance Commission
Certificate of Insurance Monthly Report
From 12/01/2016 to 01/31/2017**

Holder Name	Holder Address	Holder Code	Description of Operations	Issue Date	Coverages	Insured Name	Insured Address	Description of Operations (continued)
DiggerlandUSA	100 Pinedge Lane West Berlin, NJ 08091	1555	Certificate holder is additional insured where obligated by virtue of a written contract or written mutual aid agreement or other written agreement with the Named Assured, but only in respect to acts or operations by or on behalf of the Named Assured, and	12/14/2016	GL EX AU WC	County of Camden	Division of Insurance, County Courthouse 520 Market Street, 9th Floor Camden, NJ 08102	Company E: XS Worker Compensation \$1,000,000 XS Employers Liability \$5,000,000 x Policy Term 1/1/17 to 1/1/18 Policy # SP4054261 a specified date. A3D
Live Nation Worldwide, Inc.	BB&T Pavilion, 1 Harbour Blvd Camden, NJ 08103	1572	Certificate holder is additional insured where obligated by virtue of a written contract or written mutual aid agreement or other written agreement with the Named Assured, but only in respect to acts or operations by or on behalf of the Named Assured, and	12/14/2016	GL EX AU WC	County of Camden	Division of Insurance, County Courthouse 520 Market Street, 9th Floor Camden, NJ 08102	Company E: XS Worker Compensation \$1,000,000 XS Employers Liability \$5,000,000 x a specified date. A3D
Live Nation Worldwide, Inc.	BB&T Pavilion, 1 Harbour Blvd Camden, NJ 08103	1572	Certificate holder is additional insured where obligated by virtue of a written contract or written mutual aid agreement or other written agreement with the Named Assured, but only in respect to acts or operations by or on behalf of the Named Assured, and	12/14/2016	GL EX AU WC	County of Camden	Division of Insurance, County Courthouse 520 Market Street, 9th Floor Camden, NJ 08102	Company E: XS Worker Compensation \$1,000,000 XS Employers Liability \$5,000,000 x as respects to the Comprehensive Substance Abuse Grant.
NJ Division of Mental Health and Addiction Services	Department of Health & Human Services Division of Community Health Services 512 Lakeland Road, Suite 501 Blackwood, NJ 08012	1594	Certificate holder is additional insured where obligated by virtue of a written contract or written mutual aid agreement or other written agreement with the Named Assured, but only in respect to acts or operations by or on behalf of the Named Assured, and	12/14/2016	GL EX AU WC	County of Camden	Division of Insurance, County Courthouse 520 Market Street, 9th Floor Camden, NJ 08102	Company E: XS Worker Compensation \$1,000,000 XS Employers Liability \$5,000,000 x Policy Term 1/1/17 to
Atlantic County Police Training Ctr.	5033 English Creek Avenue Egg Harbor Twp, NJ 08234-5743	1617	Evidence of insurance. All operations usual to County Governmental Entity. CLD	12/8/2016	GL EX AU	Camden County College	PO Box 200 Blackwood, NJ 08021	
Atlantic County Police Training Ctr.	5033 English Creek Avenue Egg Harbor Twp, NJ 08234-5743	1617	Evidence of insurance. All operations usual to County Governmental Entity. CLD	12/8/2016	GL EX AU	Camden County College	PO Box 200 Blackwood, NJ 08021	
Atlantic County Police Training Ctr.	5033 English Creek Avenue Egg Harbor Twp, NJ 08234-5743	1617	Evidence of insurance. All operations usual to County Governmental Entity. A3D	12/12/2016	GL EX AU	Camden County College	PO Box 200 Blackwood, NJ 08021	
Burlington County College	601 Pemberton Brown Mills Road Pemberton, NJ 08068-1599	1621	Evidence of insurance. All operations usual to County Governmental Entity. A3D	12/12/2016	GL EX AU	Camden County College	PO Box 200 Blackwood, NJ 08021	
Overbrook High School	1200 Turnersville Rd Pine Hill, NJ 08021	1627	Evidence of insurance. All operations usual to County Governmental Entity. A3D	12/12/2016	GL EX AU	Camden County College	PO Box 200 Blackwood, NJ 08021	
NJ Council for the Humanities	28 West State Street, 6th Floor Trenton, NJ 08608 Attn: Elizabeth Motts	1630	Evidence of insurance. All operations usual to County Governmental Entity. A3D	12/12/2016	GL EX AU	Camden County College	PO Box 200 Blackwood, NJ 08021	

**Camden County Insurance Commission
Certificate of Insurance Monthly Report
From 12/01/2016 to 01/31/2017**

Holder Name	Holder Address	Holder Code	Description of Operations	Issue Date	Coverages	Insured Name	Insured Address	Description of Operations (continued)
Y.A.L.E. School	10A Jennings Rd Medford, NJ 08055	1632	Evidence of insurance. All operations usual to County Governmental Entity. A3D	12/12/2016	GL EX AU	Camden County College	PO Box 200 Blackwood, NJ 08021	
Shore Medical Center	100 Medical Center Way Somers Point, NJ 08244 Attn: Kathy Thompson, MSHA BS MT	1633	Evidence of insurance. All operations usual to County Governmental Entity. A3D	12/12/2016	GL EX AU	Camden County College	PO Box 200 Blackwood, NJ 08021	
TD Bank, N.A. - TD Wealth	Private Client Group 1006 Astoria Boulevard Cherry Hill, NJ 08034 Attn: Catherine Alessi, VP	1634	Evidence of insurance. All operations usual to County Governmental Entity. A3D	12/12/2016	GL EX AU	Camden County College	PO Box 200 Blackwood, NJ 08021	
University Doctors Family Medicine	373 S. White Horse Pike Hammonton, NJ 08037	1639	Evidence of insurance. All operations usual to County Governmental Entity. A3D	12/12/2016	GL EX AU	Camden County College	PO Box 200 Blackwood, NJ 08021	
Inspira Health Network	509 N. Broad Street Woodbury, NJ 08096 Attn: Director of Lab Services	1640	Evidence of insurance. All operations usual to County Governmental Entity. A3D	12/12/2016	GL EX AU	Camden County College	PO Box 200 Blackwood, NJ 08021	
Virtua Health School of Paramedic Sciences	401 Rt 73 N., Ste 403 50 Lake Center Street Marlton, NJ 08053	1642	Evidence of insurance. All operations usual to County Governmental Entity. CLD	12/12/2016	GL EX AU	Camden County College	PO Box 200 Blackwood, NJ 08021	
Virtua Health West Jersey Hospital	100 Townsend Ave. Berlin, NJ 08009 Clinical Lab Services	1643	Evidence of insurance. All operations usual to County Governmental Entity. A3D	12/12/2016	GL EX AU	Camden County College	PO Box 200 Blackwood, NJ 08021	
County of Gloucester	Board of Chosen Freeholders It's Department and Agencies, et al PO Box 337 Woodbury, NJ 08096	1649	Certificate holder is additional insured where obligated by virtue of a written contract or written mutual aid agreement or other written agreement with the Named Assured, but only in respect to acts or operations by or on behalf of the Named Assured, and	12/14/2016	GL EX AU WC	County of Camden	PO Box 200 Blackwood, NJ 08021	the Shared Service Agreement for the Creation, Maintenance and Administration of a Cooperative Office of County Medical Examiner. A3D 520 Market Street, 9th Floor Camden, NJ 08102 Company E: XS Worker Compensation Statutory x \$1,000,000 XS Employers Liability \$5,000,000 x \$1,00
Bayada Nurses	290 Chester Avenue Moorestown, NJ 08057	1650	Evidence of insurance. All operations usual to County Governmental Entity. A3D	12/14/2016	GL EX AU	Camden County College	PO Box 200 Blackwood, NJ 08021	
Black Horse Pike Regional School Dist.	580 Erial Rd Blackwood, NJ 08012 Frank Torcasio, Athletic Director	1651	Evidence of insurance. All operations usual to County Governmental Entity. A3D	12/14/2016	GL EX AU	Camden County College	PO Box 200 Blackwood, NJ 08021	

**Camden County Insurance Commission
Certificate of Insurance Monthly Report
From 12/01/2016 to 01/31/2017**

Holder Name	Holder Address	Holder Code	Description of Operations	Issue Date	Coverages	Insured Name	Insured Address	Description of Operations (continued)
Elmswood Hills Healthcare Center Cumberland Salem Workforce Development Board	425 Woodbury Turnersville Rd Blackwood, NJ 08012 Attn: Simon Shain	1652	Evidence of insurance. All operations usual to County Governmental Entity. A3D	12/12/2016	GL EX AU	Camden County College	PO Box 200 Blackwood, NJ 08021	
	PO Box 1500 Vineland, NJ 08362	1654	All operations usual to County Governmental Entity as respects evidence of insurance.	12/12/2016	GL EX AU	Camden County College	PO Box 200 Blackwood, NJ 08021	
Lindenwold Board of Education	801 Egg Harbor Road Lindenwold, NJ 08021	1666	Certificate holder is additional insured where obligated by virtue of a written contract or written mutual aid agreement or other written agreement with the Named Assured, but only in respect to acts or operations by or on behalf of the Named Assured, and	12/12/2016	GL EX AU	Camden County College	PO Box 200 Blackwood, NJ 08021	
Ocean County Board of Health	Ocean County Health Department Its Officers, Employees and Agents 175 Sunset Avenue, Toms River, NJ 08754 ATTN: Meg McCarthy-Klein	1668	Certificate holder is additional insured where obligated by virtue of a written contract or written mutual aid agreement or other written agreement with the Named Assured, but only in respect to acts or operations by or on behalf of the Named Assured, and	12/12/2016	GL EX AU	Camden County College	PO Box 200 Blackwood, NJ 08021	
Ocean County Board of Health	Ocean County Health Department Its Officers, Employees and Agents 175 Sunset Avenue, Toms River, NJ 08754 ATTN: Meg McCarthy-Klein	1668	Certificate holder is additional insured where obligated by virtue of a written contract or written mutual aid agreement or other written agreement with the Named Assured, but only in respect to acts or operations by or on behalf of the Named Assured, and	12/12/2016	GL EX AU	Camden County College	PO Box 200 Blackwood, NJ 08021	
Ocean County Board of Health	Ocean County Health Department Its Officers, Employees and Agents 175 Sunset Avenue, Toms River, NJ 08754 ATTN: Meg McCarthy-Klein	1668	Certificate holder is additional insured where obligated by virtue of a written contract or written mutual aid agreement or other written agreement with the Named Assured, but only in respect to acts or operations by or on behalf of the Named Assured, and	12/12/2016	GL EX AU	Camden County College	PO Box 200 Blackwood, NJ 08021	
Ocean County Board of Health	Ocean County Health Department Its Officers, Employees and Agents 175 Sunset Avenue, Toms River, NJ 08754 ATTN: Meg McCarthy-Klein	1668	Certificate holder is additional insured where obligated by virtue of a written contract or written mutual aid agreement or other written agreement with the Named Assured, but only in respect to acts or operations by or on behalf of the Named Assured, and	12/14/2016	GL, AU, EX, MM	Camden County College	PO Box 200 Blackwood, NJ 08021	
Ocean County Board of Health	Ocean County Health Department Its Officers, Employees and Agents 175 Sunset Avenue, Toms River, NJ 08754 ATTN: Meg McCarthy-Klein	1668	Certificate holder is additional insured where obligated by virtue of a written contract or written mutual aid agreement or other written agreement with the Named Assured, but only in respect to acts or operations by or on behalf of the Named Assured, and	12/14/2016	GL EX AU WC	Camden County College	PO Box 200 Blackwood, NJ 08021	Company E: XS Worker Compensation Statutory x \$1,000,000 XS Employers Liability \$5,000,000 x \$1,000,000 Policy Term 1/1/17 to 1/1/18 Policy # SP4054261
Simon/Preit Gloucester Development, LLC	Gloucester Premium Outlets 100 Premium Outlets Drive Blackwood, NJ 08012	1678	Certificate holder, SIMON/PREIT GLOUCESTER DEVELOPMENT, LLC, a Delaware limited liability company, its Managing Agent, Simon Property Group, Inc., and their respective officers, directors, shareholders, members, partners, parents, subsidiaries, related an	12/14/2016	GL EX AU WC	Camden County College	PO Box 200 Blackwood, NJ 08021	Company E: XS Worker Compensation Statutory x \$1,000,000 XS Employers Liability \$5,000,000 x \$1,000,000 <input type="checkbox"/> Policy Term 1/1/17 to 1/1/18 Policy # SP4054261
New Jersey Department of Health	Division of Epidemiology, Environmental, and Occupational Health P.O. Box 360 Trenton, NJ 08625	1682	Evidence of insurance. All operations usual to County Governmental Entity as respects the Local Core Capacity for Public Health Emergency Preparedness grant application. (see page 2) A3D	12/14/2016	GL EX AU WC	County of Camden	Division of Insurance, County Courthouse 520 Market Street, 9th Floor Camden, NJ 08102	Company E: XS Worker Compensation Statutory x \$1,000,000 XS Employers Liability \$5,000,000 x \$1,000,000 <input type="checkbox"/> Policy Term 1/1/17 to 1/1/18 Policy # SP4054261

**Camden County Insurance Commission
Certificate of Insurance Monthly Report
From 12/01/2016 to 01/31/2017**

Holder Name	Holder Address	Holder Code	Description of Operations	Issue Date	Coverages	Insured Name	Insured Address	Description of Operations (continued)
New Jersey Department of Health	Division of Family Health Services P.O Box 364 Trenton, NJ 08625	1683	Evidence of insurance. All operations usual to County Governmental Entity as respects a grant. (see page 2) A3D	12/14/2016	GL EX AU WC	County of Camden	Division of Insurance, County Courthouse 520 Market Street, 9th Floor Camden, NJ 08102	Company E: XS Worker Compensation \$1,000,000 XS Employers Liability \$5,000,000 x Policy Term 1/1/17 to 1/1/18 Policy # SP4054261
Veterans Job Fair 2016	BB&T Pavillion 1 Harbour Blvd. Camden, NJ 08103	1691	Evidence of insurance. All operations usual to County Governmental Entity as respects the Veterans Job Fair on a specified date. (see page 2) A3D	12/14/2016	GL EX AU WC	County of Camden	Division of Insurance, County Courthouse 520 Market Street, 9th Floor Camden, NJ 08102	Company E: XS Worker Compensation \$1,000,000 XS Employers Liability \$5,000,000 x Policy Term 1/1/17 to 1/1/18 Policy # SP4054261
Cinnaminson High School	1197 Riverton Road Cinnaminson, NJ 08077 ATT: Amy O'Hearn	1703	Certificate holder is additional insured where obligated by virtue of a written contract or written mutual aid agreement or other written agreement with the Named Assured, but only in respect to acts or operations by or on behalf of the Named Assured, and	12/14/2016	GL EX AU	Camden County College	PO Box 200 Blackwood, NJ 08021	
Barry D Brown Health Education Center	106 Carnie Blvd. Voorhees, NJ 08034	1706	Evidence of insurance. All operations usual to County Governmental Entity. (see page 2) A3D	12/14/2016	GL EX AU WC	County of Camden	Division of Insurance, County Courthouse 520 Market Street, 9th Floor Camden, NJ 08102	Company E: XS Worker Compensation \$1,000,000 XS Employers Liability \$5,000,000 x Policy Term 1/1/17 to 1/1/18 Policy # SP4054261
Vista's Clubhouse	AG-Candlebrook Echelon Glen Parent, LLC 225 Echelon Road Voorhees Township, NJ 08043	1708	Evidence of insurance. All operations usual to County Governmental Entity. (See page 2) A3D	12/14/2016	GL EX AU WC	County of Camden	Division of Insurance, County Courthouse 520 Market Street, 9th Floor Camden, NJ 08102	Company E: XS Worker Compensation \$1,000,000 XS Employers Liability \$5,000,000 x Policy Term 1/1/17 to 1/1/18 Policy # SP4054261
Parking Authority of the City of Camden	10 Delaware Avenue Camden, NJ 08103	1710	Certificate holder is additional insured where obligated by virtue of a written contract or written mutual aid agreement or other written agreement with the Named Assured, but only in respect to acts or operations by or on behalf of the Named Assured, and	12/14/2016	GL EX AU WC	Camden County Improvement Authority	Voorhees Town Center 2220 Voorhees Town Center Voorhees, NJ 08043	Company E: XS Worker Compensation \$1,000,000 XS Employers Liability \$5,000,000 x Policy Term 1/1/17 to 1/1/18 Policy # SP4054261
Delaware River Port Authority & NJ Economic	Development Authority 36 West State Street, PO Box 990 Trenton, NJ 08625	1724	Certificate holder is additional insured where obligated by virtue of a written contract or written mutual aid agreement or other written agreement with the Named Assured, but only in respect to acts or operations by or on behalf of the Named Assured, and	12/14/2016	GL EX AU WC	County of Camden	Division of Insurance, County Courthouse 520 Market Street, 9th Floor Camden, NJ 08102	Company E: XS Worker Compensation \$1,000,000 XS Employers Liability \$5,000,000 x Policy Term 1/1/17 to 1/1/18 Policy # SP4054261
To Whom it May Concern		1733	Evidence of insurance. All operations usual to County Governmental Entity. (SEE PAGE 2) A3D	12/14/2016	GL EX AU WC	County of Camden	Division of Insurance, County Courthouse 520 Market Street, 9th Floor Camden, NJ 08102	Company E: XS Worker Compensation \$1,000,000 XS Employers Liability \$5,000,000 x Policy Term 1/1/17 to 1/1/18 Policy # SP4054261
The County of Camden and The State of New Jersey	2600 Mr. Ephraim Ave Camden, NJ 08104	1737	Certificate holder is additional insured where obligated by virtue of a written contract or written mutual aid agreement or other written agreement with the Named Assured, but only in respect to acts or operations by or on behalf of the Named Assured, and	12/14/2016	GL EX AU	Camden County College	PO Box 200 Blackwood, NJ 08021	as respect to Employment Training through the Camden County One-Stop Career Center. A3D
Delaware River Port Authority	P.O. Box 1949, One Port Center 2 Riverside Dr. Camden, NJ 08101	1740	Evidence of insurance. All operations usual to County Governmental Entity as respects to 200 Federal Street Block 139.02. Lot. Certificate holder is included as mortgagee. A3D	12/14/2016	PR	County of Camden	Division of Insurance, County Courthouse 520 Market Street, 9th Floor Camden, NJ 08102	

**Camden County Insurance Commission
Certificate of Insurance Monthly Report
From 12/01/2016 to 01/31/2017**

Holder Name	Holder Address	Holder Code	Description of Operations	Issue Date	Coverages	Insured Name	Insured Address	Description of Operations (continued)
Block 1401 Lot 33 LLC, Lot 33 Garage LLC	Cooper Medical Services, Inc. c/o Cooper University Hospital, Risk Mngt. One Cooper Plaza, 106G Keleman Camden, NJ 08103	1744	Evidence of insurance: Parking Garage, One Cooper Plaza, Benson & Broadway, Camden, NJ Building Coverage \$31,930,481, Contents \$350,000	12/14/2016	PR	Camden County Improvement Authority	Voorhees Town Center 2220 Voorhees Town Center Voorhees, NJ 08043	
State of NJ - DFD	P.O. Box 716 Trenton, NJ 08625-0716 Attn: Chris Palmer	1749	Evidence of insurance. All operations usual to County Governmental Entity as respects to a Grant. (see page 2) A3D	12/14/2016	GL EX AU WC	County of Camden	Division of Insurance, County Courthouse 520 Market Street, 9th Floor Camden, NJ 08102	Company E: XS Worker Compensation \$1,000,000 XS Employers Liability \$5,000,000 x Policy Term 1/1/17 to 1/1/18 Policy # SP4054261
MEF Delaware Holdings, LLC	40 Airport Road Lakewood, NJ 08701	1761	Certificate holder is additional insured where obligated by virtue of a written contract or written mutual aid agreement or other written agreement with the Named Assured, but only in respect to acts or operations by or on behalf of the Named Assured, and	12/14/2016	GL EX AU WC	County of Camden	Division of Insurance, County Courthouse 520 Market Street, 9th Floor Camden, NJ 08102	Company E: XS Worker Compensation \$1,000,000 XS Employers Liability \$5,000,000 x Policy Term 1/1/17 to 1/1/18 Policy # SP4054261
Township of Gloucester	1261 Chewslanding-Clementon RD PO Box 8 Blackwood, NJ 08012	1762	Evidence of insurance. All operations usual to County Governmental Entity. A3D	12/12/2016	GL EX AU	Camden County College	PO Box 200 Blackwood, NJ 08021	
Township of Gloucester	1261 Chewslanding-Clementon RD PO Box 8 Blackwood, NJ 08012	1762	Evidence of insurance. All operations usual to County Governmental Entity. A3D	12/12/2016	AU EX PHYS	Camden County College	PO Box 200 Blackwood, NJ 08021	
TD Bank. N.A.	12000 Horizon Way Mount Laurel, NJ 08054	1763	Certificate holder is additional insured where obligated by virtue of a written contract or written mutual aid agreement or other written agreement with the Named Assured, but only in respect to acts or operations by or on behalf of the Named Assured, and	12/14/2016	GL EX AU WC	County of Camden	Division of Insurance, County Courthouse 520 Market Street, 9th Floor Camden, NJ 08102	Company E: XS Worker Compensation \$1,000,000 XS Employers Liability \$5,000,000 x Policy Term 1/1/17 to 1/1/18 Policy # SP4054261
NJ Dept. of Human Services	Div. of Family Development Quakerbridge Plaza, Bldg. 6 P.O. Box 716 Trenton, NJ 08625-0716	1776	Evidence of insurance. All operations usual to County Governmental Entity as respects to the Grant Renewal Package for contract # UC17004. (see page 2) A3D	12/14/2016	GL EX AU WC	County of Camden	Division of Insurance, County Courthouse 520 Market Street, 9th Floor Camden, NJ 08102	Company E: XS Worker Compensation \$1,000,000 XS Employers Liability \$5,000,000 x Policy Term 1/1/17 to 1/1/18 Policy # SP4054261
NJ Dept. of Human Services	Div. of Family Development Quakerbridge Plaza, Bldg. 6 P.O. Box 716 Trenton, NJ 08625-0716	1776	Evidence of insurance. All operations usual to County Governmental Entity as respects to the Grant Renewal Package for contract # UC17004. (see page 2) A3D	12/14/2016	CRIME	County of Camden	Division of Insurance, County Courthouse 520 Market Street, 9th Floor Camden, NJ 08102	
Camden County College	420 N. Woodbury - Turnersville Road Blackwood, NJ 08012	1778	Evidence of insurance. All operations usual to County Governmental Entity as respects to use of facilities for the MRC Training. (see page 2) A3D	12/14/2016	GL EX AU WC	County of Camden	Division of Insurance, County Courthouse 520 Market Street, 9th Floor Camden, NJ 08102	Company E: XS Worker Compensation \$1,000,000 XS Employers Liability \$5,000,000 x Policy Term 1/1/17 to 1/1/18 Policy # SP4054261
The Fountains at Cedar Parke	114 Hayes Mill Road Atco, NJ 08004	1785	Certificate holder is additional insured where obligated by virtue of a written contract or written mutual aid agreement or other written agreement with the Named Assured, but only in respect to acts or operations by or on behalf of the Named Assured, and	12/14/2016	GL EX AU	Camden County College	PO Box 200 Blackwood, NJ 08021	

**Camden County Insurance Commission
Certificate of Insurance Monthly Report
From 12/01/2016 to 01/31/2017**

Holder Name	Holder Address	Holder Code	Description of Operations	Issue Date	Coverages	Insured Name	Insured Address	Description of Operations (continued)
Namdar Realty Group	Insurance Department 150 Great Neck Road, Suite 304 Great Neck, NY 11021	1798	Evidence of insurance. All operations usual to County Governmental Entity as respects to the Voorhees Town Office (Camden County) (see page 2) A3D	12/14/2016	GL EX AU WC	County of Camden	Division of Insurance, County Courthouse 520 Market Street, 9th Floor Camden, NJ 08102	Company E: XS Worker Compensation \$1,000,000 XS Employers Liability \$5,000,000 x □ Policy Term 1/1/17 to 1/1/18 Policy # SP4054261 coverage contained in any such written contract or written mutual aid agreement or other written agreement as respect to lease agreement for unit located in Voorhees Town Center. A3D
PR Echelon Limited Partnership	Voorhees Town Center Namdar Realty Group 150 Great Neck Road, Suite #304 Great Neck, NY 11021	1799	Certificate holder and Echelon Title, LLC, Echelon Residential Unit Owner, LLC, PREIT Services, LLC, PREIT Associates, LP are additional insureds where obligated by virtue of a written contract or written mutual aid agreement or other written agreement	12/14/2016	GL EX PR	Camden County Improvement Authority	Voorhees Town Center 2220 Voorhees Town Center Voorhees, NJ 08043	Company E: XS Worker Compensation \$1,000,000 Statutory x
PR Echelon Limited Partnership	Voorhees Town Center Namdar Realty Group 150 Great Neck Road, Suite #304 Great Neck, NY 11021	1799	Certificate holder and Echelon Title, LLC, Echelon Residential Unit Owner, LLC, PREIT Services, LLC, PREIT Associates, LP are additional insureds where obligated by virtue of a written contract or written mutual aid agreement or other written agreement	12/14/2016	GL EX PR	Camden County Improvement Authority	Voorhees Town Center 2220 Voorhees Town Center Voorhees, NJ 08043	coverage contained in any such written contract or written mutual aid agreement or other written agreement as respect to lease agreement for unit located in Voorhees Town Center. A3D
PR Echelon Limited Partnership	Voorhees Town Center Namdar Realty Group 150 Great Neck Road, Suite #304 Great Neck, NY 11021	1799	Certificate holder and Echelon Title, LLC, Echelon Residential Unit Owner, LLC, PREIT Services, LLC, PREIT Associates, LP are additional insureds where obligated by virtue of a written contract or written mutual aid agreement or other written agreement	1/25/2017	GL EX PR	Camden County Improvement Authority	Voorhees Town Center 2220 Voorhees Town Center Voorhees, NJ 08043	coverage contained in any such written contract or written mutual aid agreement or other written agreement as respect to lease agreement for unit located in Voorhees Town Center. A3D
Salvation Army	1865 Harrison Ave Camden NJ 08105	1803	Certificate holder is additional insured where obligated by virtue of a written contract or written mutual aid agreement or other written agreement with the Named Assured, but only in respect to acts or operations by or on behalf of the Named Assured, and	12/14/2016	GL EX AU WC	County of Camden	Division of Insurance, County Courthouse 520 Market Street, 9th Floor Camden, NJ 08102	Company E: XS Worker Compensation \$1,000,000 XS Employers Liability \$5,000,000 x □ Policy Term 1/1/17 to 1/1/18 Policy # SP4054261
Cooper University Hospital	Three Cooper Plaza, STE 316 Camden, NJ 08103 ATTN: Legal Department	1821	Evidence of insurance. All operations usual to County Governmental Entity. A3D	12/12/2016	GL EX AU	Camden County College	PO Box 200 Blackwood, NJ 08021	
County of Camden, State of New Jersey	2600 Mt. Ephraim Ave. Camden, NJ 08104 ATTN: Gary Bauer, CNHA Admin	1822	Evidence of insurance. All operations usual to County Governmental Entity. A3D	12/12/2016	GL EX AU	Camden County College	PO Box 200 Blackwood, NJ 08021	
Kennedy Health System	1099 White Horse Rd Voorhees, NJ 08043 ATTN: Darlene Lord	1823	Evidence of insurance. All operations usual to County Governmental Entity. A3D	12/12/2016	GL EX AU	Camden County College	PO Box 200 Blackwood, NJ 08021	
Kennedy Health System	1099 White Horse Rd Voorhees, NJ 08043 ATTN: Darlene Lord	1823	Evidence of insurance. All operations usual to County Governmental Entity. A3D	12/12/2016	GL EX AU	Camden County College	PO Box 200 Blackwood, NJ 08021	
Kennedy Health System	1099 White Horse Rd Voorhees, NJ 08043 ATTN: Darlene Lord	1823	Evidence of insurance. All operations usual to County Governmental Entity. A3D	12/12/2016	GL EX AU	Camden County College	PO Box 200 Blackwood, NJ 08021	

**Camden County Insurance Commission
Certificate of Insurance Monthly Report
From 12/01/2016 to 01/31/2017**

Holder Name	Holder Address	Holder Code	Description of Operations	Issue Date	Coverages	Insured Name	Insured Address	Description of Operations (continued)
NJ Historical Commission	225 W. State Street Trenton, NJ 08625 ATTN: Sara Cureton, Director	1824	Evidence of insurance. All operations usual to County Governmental Entity. A3D	12/12/2016	GL EX AU	Camden County College	PO Box 200 Blackwood, NJ 08021	
NJ Historical Commission	225 W. State Street Trenton, NJ 08625 ATTN: Sara Cureton, Director	1824	Evidence of insurance. All operations usual to County Governmental Entity. A3D	12/12/2016	GL EX AU	Camden County College	PO Box 200 Blackwood, NJ 08021	
Northbrook Behavioral Hospital	425 Woodbury-Turnersville Rd Blackwood, NJ 08012 ATTN: Human Resources	1825	Evidence of insurance. All operations usual to County Governmental Entity. A3D	12/12/2016	GL EX AU	Camden County College	PO Box 200 Blackwood, NJ 08021	
Northbrook Behavioral Hospital	425 Woodbury-Turnersville Rd Blackwood, NJ 08012 ATTN: Human Resources	1825	Evidence of insurance. All operations usual to County Governmental Entity. A3D	12/12/2016	GL EX AU	Camden County College	PO Box 200 Blackwood, NJ 08021	
Northbrook Behavioral Hospital	425 Woodbury-Turnersville Rd Blackwood, NJ 08012 ATTN: Human Resources	1825	Evidence of insurance. All operations usual to County Governmental Entity. A3D	12/12/2016	GL EX AU	Camden County College	PO Box 200 Blackwood, NJ 08021	
Our Lady of Lourdes Medical Center	1600 Haddon Ave Camden, NJ 08103	1828	Evidence of insurance. All operations usual to County Governmental Entity. A3D	12/12/2016	GL EX AU	Camden County College	PO Box 200 Blackwood, NJ 08021	
Our Lady of Lourdes Medical Center	1600 Haddon Ave Camden, NJ 08103	1828	Evidence of insurance. All operations usual to County Governmental Entity. A3D	12/12/2016	GL EX AU	Camden County College	PO Box 200 Blackwood, NJ 08021	
Eastern Regional High School	1401 Laurel Oak Road, Box 2500 Voorhees NJ 08043-0885	1836	Evidence of insurance. All operations usual to County Governmental Entity. (see page 2) A3D	12/14/2016	GL EX AU WC	County of Camden	Division of Insurance, County Courthouse 520 Market Street, 9th Floor Camden, NJ 08102	Company E: XS Worker Compensation Statutory x \$1,000,000 XS Employers Liability \$5,000,000 x \$1,000,000 Policy Term 1/1/17 to 1/1/18 Policy # SP4054261
NJ DMV	Po Box 160 Trenton, NJ 08666	1837	Evidence of insurance. All operations usual to County Governmental Entity as respects to Code 56 Contractor in Transit. Camden County Municipal Utility Authority has a \$800,000 SIR on WC. The program stated above is excess of the Camden County Municipal U	12/14/2016	GL EX AU WC	Camden County Municipal Utilities Authority	1645 Ferry Avenue Camden, NJ 08104	Company E: XS Worker Compensation Statutory x \$1,000,000 XS Employers Liability \$5,000,000 x \$1,000,000 Policy Term 1/1/17 to 1/1/18 Policy # SP4054261
NJ DMV	Po Box 160 Trenton, NJ 08666	1837	Evidence of insurance. All operations usual to County Governmental Entity as respects to Code 56 Contractor in Transit. Camden County Municipal Utility Authority has a \$750,000 SIR on WC. The program stated above is excess of the Camden County Municipal U	12/14/2016	GL EX AU WC	Camden County Municipal Utilities Authority	1645 Ferry Avenue Camden, NJ 08104	Company E: XS Worker Compensation Statutory x \$1,000,000 XS Employers Liability \$5,000,000 x \$1,000,000 Policy Term 1/1/17 to 1/1/18 Policy # SP4054261

**Camden County Insurance Commission
Certificate of Insurance Monthly Report
From 12/01/2016 to 01/31/2017**

Holder Name	Holder Address	Holder Code	Description of Operations	Issue Date	Coverages	Insured Name	Insured Address	Description of Operations (continued)	
State of New Jersey	Department of Treasury Division of Property Management&Constructi on 33 West State Street, 9th Floor, PO Box 229 Trenton, NJ 08625	1851	Certificate holder is additional insured where obligated by virtue of a written contract or written mutual aid agreement or other written agreement with the Named Assured, but only in respect to acts or operations by or on behalf of the Named Assured, and	1/12/2017	GL EX PR	Camden County Improvement Authority	Voorhees Town Center 2220 Voorhees Town Center Voorhees, NJ 08043		
Atco Medical Associates	289 White Horse Pike, Suite 101 Atco, NJ 08004 Attn: Rebecca Urso	1853	Evidence of insurance. All operations usual to County Governmental Entity as respects student externship for the CMA (Certified Medical Assistant) program.	1/19/2017	GL EX AU WC	Camden County College	PO Box 200 Blackwood, NJ 08021		
Atco Medical Associates	289 White Horse Pike, Suite 101 Atco, NJ 08004 Attn: Rebecca Urso	1853	Evidence of insurance. All operations usual to County Governmental Entity as respects student externship for the CMA (Certified Medical Assistant) program. (SEE PAGE 2) A3D	1/19/2017	GL EX AU WC	Camden County College	PO Box 200 Blackwood, NJ 08021	Company E: XS Worker Compensation Statutory x \$1,000,000 XS Employers Liability \$5,000,000 x \$1,000,000 Policy Term 1/1/17 to 1/1/18 Policy # SP4054261	
TD Bank	National Association 1701 Route 70 East Cherry Hill, NJ 08002	1863	Evidence of insurance. All operations usual to County Governmental Entity as respects to Camden Baseball Stadium project. (see page 2)	1/25/2017	GL EX AU WC	Camden County Improvement Authority	Voorhees Town Center 2220 Voorhees Town Center Voorhees, NJ 08043	Company E: XS Worker Compensation Statutory x \$1,000,000 XS Employers Liability \$5,000,000 x \$1,000,000 Policy Term 1/1/17 to 1/1/18 Policy # SP4054261	
Rowan University - Rutgers Camden Board of Governors	Camden Waterfront Technology Center 200 Federal Street, Suite 300 Camden, NJ 08103 Attn: Chief Executive Officer	1864	Certificate holder and their respective trustees, officers, directors, employees, servants and agents are additional insured where obligated by virtue of a written contract or written mutual aid agreement or other written agreement with the Named Assured,	1/25/2017	GL EX AU WC	Camden County Improvement Authority	Voorhees Town Center 2220 Voorhees Town Center Voorhees, NJ 08043	on coverage contained in any such written contract or written mutual aid agreement or other written agreement as respects to the Joint Health Sciences Campus Biomedical Research Facility. Company E: XS Worker Compensation Statutory x \$1,000,000	
Senior Citizens United Community Services (SCUCS)	537 West Nicholson Road Audubon, NJ 08106	1866	Evidence of insurance. All operations usual to County Governmental Entity as respects disassembly and removal of walk-in freezer tentatively scheduled for 2/1/17 at SCUCS' location by Northeast Mechanical, Meridian/Pritchard or Camden County personnel. (S)	1/26/2017	GL EX AU WC	County of Camden	Division of Insurance, County Courthouse 520 Market Street, 9th Floor Camden, NJ 08102	Company E: XS Worker Compensation Statutory x \$1,000,000 XS Employers Liability \$5,000,000 x \$1,000,000 Policy Term 1/1/17 to 1/1/18 Policy # SP4054261	
Waterford Township Board of Education	Attn: Business Office 1106 Old White Horse Pike Waterford, NJ 08089	1867	Evidence of insurance. All operations usual to County Governmental Entity.	1/26/2017	GL, AU, EX, MM	Camden County Improvement Authority	Voorhees Town Center 2220 Voorhees Town Center Voorhees, NJ 08043		
Waterford Township Board of Education	Attn: Business Office 1106 Old White Horse Pike Waterford, NJ 08089	1867	Evidence of insurance. All operations usual to County Governmental Entity.	1/26/2017	GL, AU, EX, MM	Camden County Improvement Authority	Voorhees Town Center 2220 Voorhees Town Center Voorhees, NJ 08043		
Camden County Dept. of Events & Community Outreach	1301 Park Blvd. Cherry Hill, NJ 08002	1870	Evidence of insurance. All operations usual to County Governmental Entity as respects (7) Camden County Board of Freeholders sponsored senior citizen dance series/(3) Camden County Board of Freeholders sponsored special populations dance series for the ye	1/30/2017	GL EX AU WC	County of Camden	Division of Insurance, County Courthouse 520 Market Street, 9th Floor Camden, NJ 08102	Company E: XS Worker Compensation Statutory x \$1,000,000 XS Employers Liability \$5,000,000 x \$1,000,000 Policy Term 1/1/17 to 1/1/18 Policy # SP4054261	
Total # of Holders =		218							